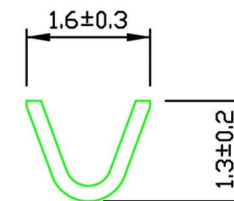
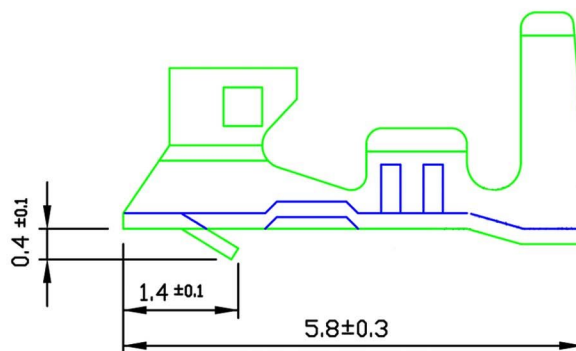
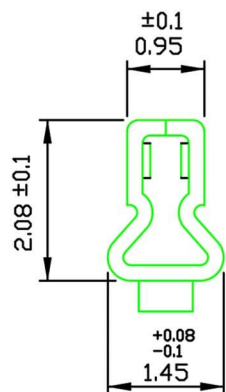


Section A-A'



Section B-B'

Specifications & Ordering Information:

Material	Insulation O.D.	Finish	Wire Range	Quantity/Reel
Phosphor Bronze	Ø 1.4mm max	Tin-Plated	AWG#24~#30	10,000 PCS

<b>RoHS Compliant</b>		<b>HSM 玄茂科技股份有限公司</b> <b>HSUAN MAO TECHNOLOGY CO., LTD.</b>	
APPD. 核准 <b>Betty</b>		TOLERANCE 容許公差 1-10:±0.2 10-20:±0.3 20-40:±0.4 40 UP:±0.5	PART NAME 品名 2.0mm TERMINAL PHOSPHOR BRONZE MATERIAL TIN PLATED SUITABLE AWG24~30 1R=10K PCS ROHS
DWG. 製圖 <b>Betty</b>	SCALE 比例 參考	UNIT 單位 M M SIZE 紙張尺寸 A 4	PART NO. 料號 T2003-TPO00000R
DATE 制表日 2010/11/25	PAGE 張數 1 / 1	REV. 版次 A	