

**MATERIAL AND FINISH**

**Housing: Standard Material: Glass Filled Polyester UL94V-0**

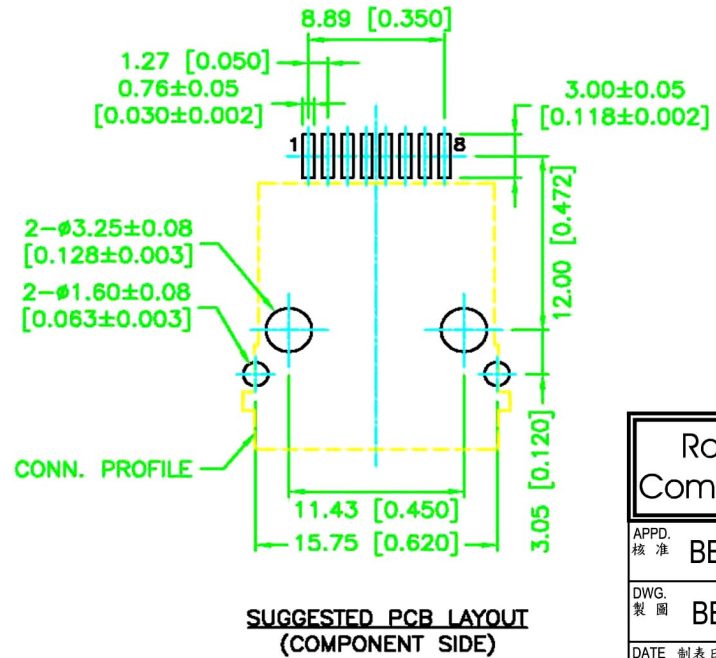
**Standard Color:Black.**

**Contact: 0.35mm Thickness Alloy C5210,**

**Gold Plating Over Nickel in Contact Area,**

**Tin Plating Over Nickel in Solder Area.**

**Plating: Selective Gold Plating.**



**SUGGESTED PCB LAYOUT  
(COMPONENT SIDE)**

RoHS Compliant		<b>HSM 玄茂科技股份有限公司</b> <b>HSUAN MAO TECHNOLOGY CO., LTD.</b>	
APPD. 核准 <b>BETTY</b>		TOLERANCE 容許公差 .0 ± .00 ± ANG. ±	PART NAME 品名 SIDE ENTRY P.C.B. JACK 8P8C SMT W/ PANEL STOP(SHIELDED) BLACK INSULATOR
DWG. 製圖 <b>BETTY</b>	SCALE 比例 參考	UNIT 單位 M M	PART NO. 料號 <b>C0065-88DCXB00R</b>
DATE 制表日 <b>2007/08/15</b>	PAGE 張數 1 OF 1	REV. 版次 A	