

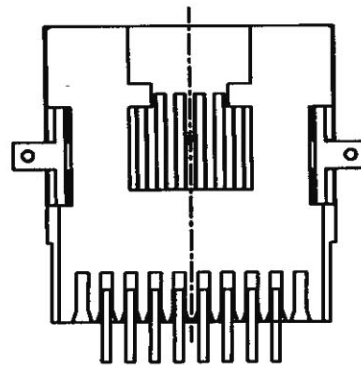
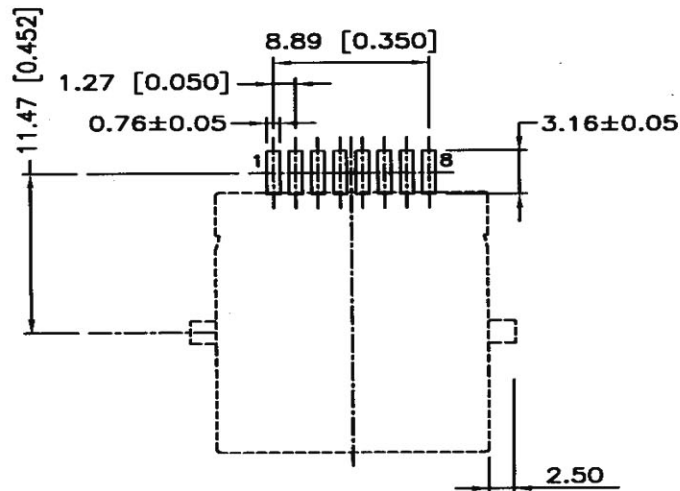
### MATERIAL AND FINISH

Housing: Standard Material Glass Filled Polyester UL 94V-0  
Standard Color Black.

Contact: 0.35mm Thickness Phosphor Bronze,  
Gold Plating: Selective Gold Plating.

### ELECTRICAL:

1. Current Rating : 1.5 AMP
2. Voltage Rating : 150 VAC
3. Contact Resistance : 20 Milliohms MAX
4. Insulation Resistance : 500 Milliohms MIN
5. Dielectric Withstanding Voltage : 1000 VAC, 1min



**SUGGESTED PCB LAYOUT**  
(COMPONENT SIDE)

RoHS Compliant		<b>HSM</b> 玄茂科技股份有限公司 HSUAN MAO TECHNOLOGY CO., LTD.	
APPD. 核准	SCALE 比例	TOLERANCE 容許公差	PART NAME 品名
DWG. 製圖	HELEN	0 ± 0.38 .00 ± 0.25 ANG. ± 3°	SIDE ENTRY PCB SMT JACK 10P8C W/O SHIELDED W/SOLDER PAD W/O SPLIT FOOT BLACK INSULATOR ROHS
DATE 制表日	UNIT 單位	SIZE 紙張尺寸	PART NO.
2008/11/10	MM	A4	料號 C0077-08DNXB00R
	PAGE 張數	REV. 版本	
	1 OF 1	A	