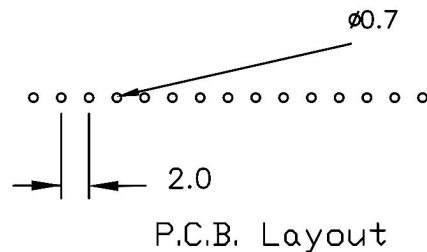
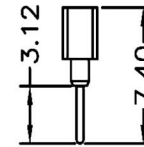
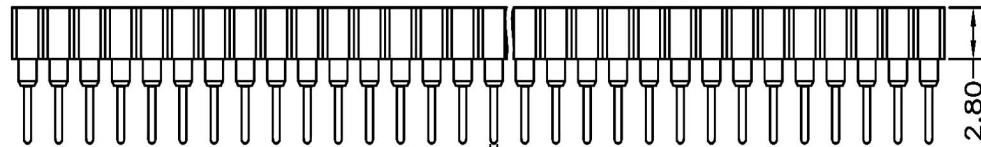
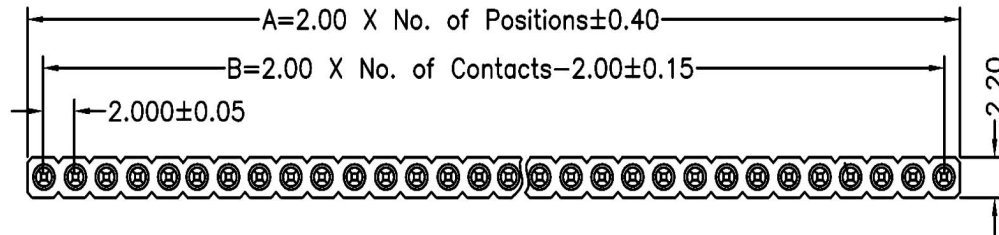


Technical Data

Material:
 Pin(outer sleeve): Brass,machined CuZn38Pb2
 Clip(contact 6 finger): Beryllium copper,heat treated
 Plating(outer sleeve):
 Tin plated:2μm/80μ"Ni, 5μm/200μ"Sn
 Gold Plated:2μm/80μ"Ni,0.8 μ " gold
 Plating(contact): 2μm/80μ"Ni, gold or Tin plated
 Insulator(black): PPS (UL94V-0)

Electrical:
 Current rating: 3Amps/contact max.
 Contact resistance: ≤4mΩ/contact
 Insulation resistance: ≥1000MΩ at V=100V
 Operating voltage: 60VAC/DC

Mechanical:
 Average insertion force with steel pin of
 □0.43mm/0.17": <75g
 Average withdrawal force with steel pin of
 □0.43mm/0.17": >25g min.
 Mechanical life cycle:min.200
 Operating temperatures: Gold Plated:-55°C to+105°C
 Tin plated:-40°C to+105°C
 Soldering temperature: +260°C,10s max



RoHS Compliant		HSM 玄茂科技股份有限公司 HSUAN MAO TECHNOLOGY CO., LTD.	
APPD. 核准 Betty	SCALE 比例 參考	TOLERANCE: ANGLE ±5° X.XXX ±0.05 X.XX ±0.15 X.X ±0.20 X. ±0.35	PART NAME 品名
DWG. 製圖 Betty			2.0mm SIP SOCKET MACHINED PIN 6 FINGERED CLIP H=2.8mm 1XXXP PIN:TIN CLIP:GOLD PLATING DIP LENGTH 7.4mm ROHS
DATE 制表日 2013/10/14	UNIT 單位 M M	SIZE 紙張尺寸 A 4	PART NO. 料號 C0116-XXSBAB00R
	PAGE 張數 1 OF 1	REV. 版次 B	