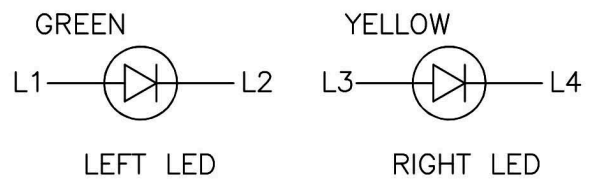


PCB LAYOUT

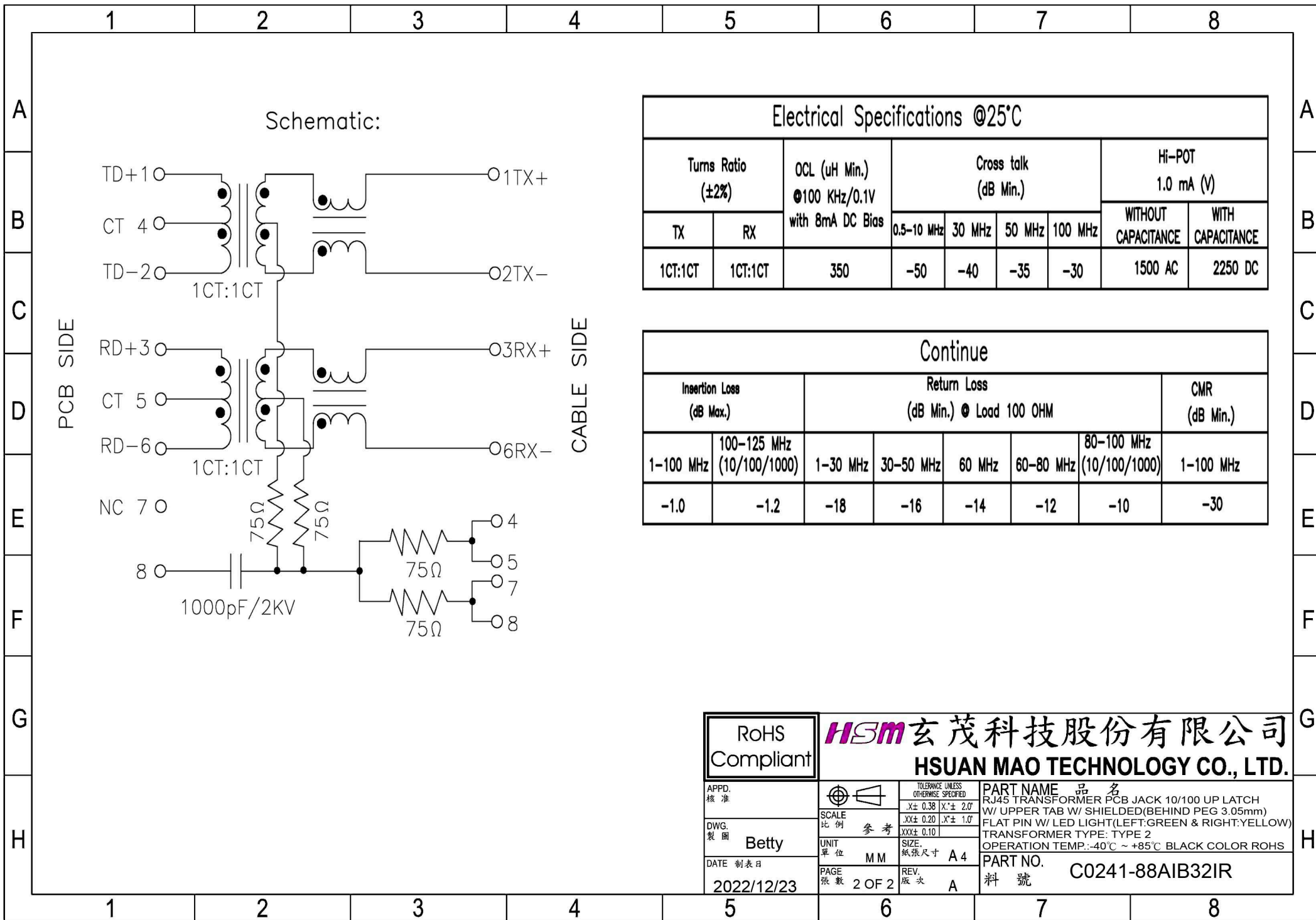


NOTE:

1. Shielded – 0.25mm THICKNESS BRASS C2680 H. PLATING NICKEL 20u” Min.
2. Housing – Standard Material LCP, Glass Filled Polyester UL94V-0 Standard Color Black.
3. RJ Terminal – Plastic: LCP UL94V-0, Standard Color Black. Pin: 0.35mm Thickness Phos-Bronze C5210 EH. Plating: Nickel 40u”~60u” for all and Sn 100% , and Gold Plating.
4. Input Terminal – Plastic: LCP, Glass Filled, UL94V-0, Standard Color Black. Pin: 0.35mm SUS430. Plating: Nickel 40u”~60u” for all and Sn 100%.

Industrial operation temp. (-40°C to +85°C)

RoHS Compliant		HSM 玄茂科技股份有限公司 HSUAN MAO TECHNOLOGY CO., LTD.	
APPD. 核准		TOLERANCE UNLESS OTHERWISE SPECIFIED .X±0.38 .X'±2.0' .XX±0.20 .X'±1.0' .XXX±0.10	PART NAME 品名 RJ45 TRANSFORMER PCB JACK 10/100 UP LATCH W/ UPPER TAB W/ SHIELDED (BEHIND PEG 3.05mm) FLAT PIN W/ LED LIGHT (LEFT: GREEN & RIGHT: YELLOW) TRANSFORMER TYPE: TYPE 2 OPERATION TEMP.: -40°C ~ +85°C BLACK COLOR ROHS
DWG. 製圖	Betty	SCALE 比例 參考	PART NO. 料號 C0241-88AIB32IR
DATE 制表日	2022/12/23	UNIT 單位 MM	
		PAGE 張數 1 OF 2	
		REV. 版次 A	



Electrical Specifications @25°C

Turns Ratio (±2%)		OCL (uH Min.) @100 KHz/0.1V with 8mA DC Bias	Cross talk (dB Min.)				Hi-POT 1.0 mA (V)	
TX	RX		0.5-10 MHz	30 MHz	50 MHz	100 MHz	WITHOUT CAPACITANCE	WITH CAPACITANCE
1CT:1CT	1CT:1CT	350	-50	-40	-35	-30	1500 AC	2250 DC

Continue

Insertion Loss (dB Max.)		Return Loss (dB Min.) @ Load 100 OHM					CMR (dB Min.)
1-100 MHz	100-125 MHz (10/100/1000)	1-30 MHz	30-50 MHz	60 MHz	60-80 MHz	80-100 MHz (10/100/1000)	1-100 MHz
-1.0	-1.2	-18	-16	-14	-12	-10	-30

RoHS Compliant	HSM 玄茂科技股份有限公司 HSUAN MAO TECHNOLOGY CO., LTD.	
APPD. 核准		TOLERANCE UNLESS OTHERWISE SPECIFIED .X± 0.38 .X'± 2.0' .XX± 0.20 .X'± 1.0' .XXX± 0.10
DWG. 製圖	SCALE 比例 參考	PART NAME 品名 RJ45 TRANSFORMER PCB JACK 10/100 UP LATCH W/ UPPER TAB W/ SHIELDED(BEHIND PEG 3.05mm) FLAT PIN W/ LED LIGHT(LEFT:GREEN & RIGHT:YELLOW) TRANSFORMER TYPE: TYPE 2 OPERATION TEMP.: -40°C ~ +85°C BLACK COLOR ROHS
DATE 制表日	UNIT 單位 M M	PART NO. C0241-88AIB32IR
2022/12/23	PAGE 張數 2 OF 2	料號
	REV. 版次 A	