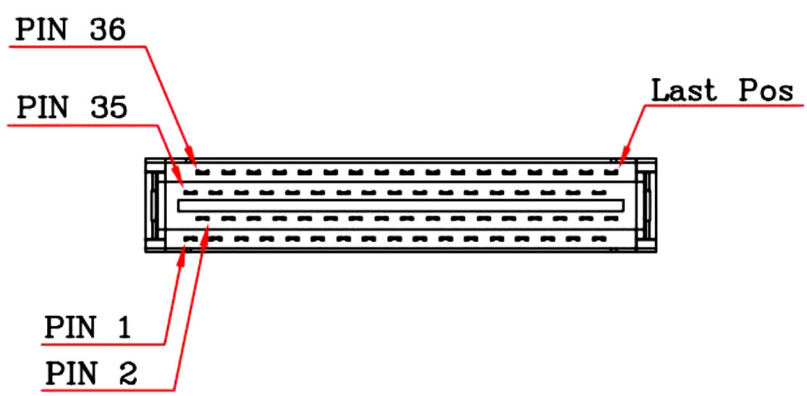
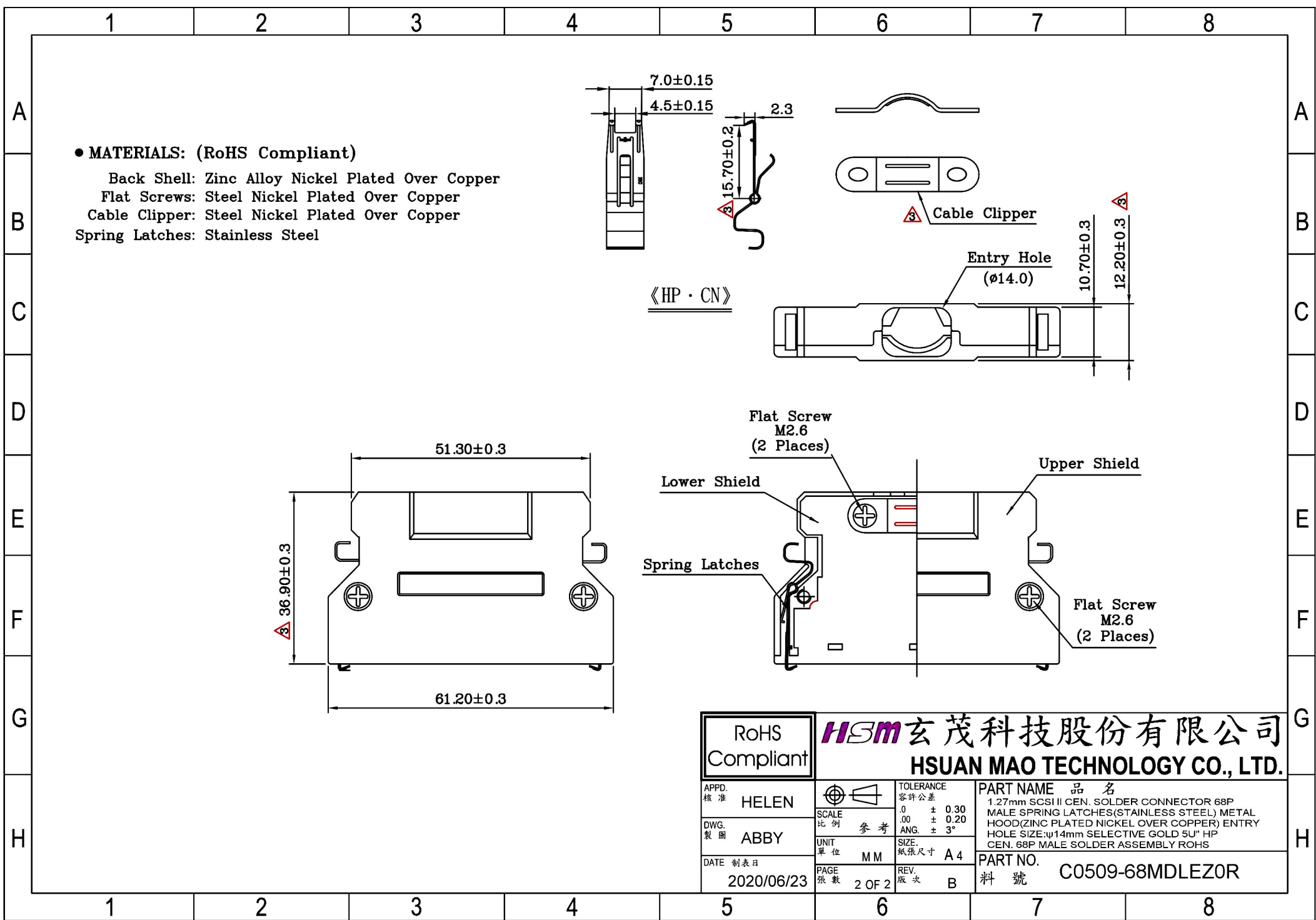


● **MATERIALS: (RoHS Compliant)**
 Housing: Plastic Thermoplastic
 P.B.T UL94V-0 Black
 Contacts: Phosphor Bronze Gold
 Selective Plated
 Front Shell: Steel Nickel Plated Over Copper

● **ELECTRICAL CHARACTERISTICS:**
 Contact Current Rating: 0.5 Amp
 Dielectric Withstanding Voltage: 500V AC
 Insulation Resistance: >500MΩ/Min
 Contact Resistance: 35mΩ/Max
 Operation Temperature: -55°C ~ +85°C



RoHS Compliant		HSM 玄茂科技股份有限公司 HSUAN MAO TECHNOLOGY CO., LTD.	
APPD. 核准 HELEN		TOLERANCE 容許公差 .0 ± 0.30 .00 ± 0.20 ANG. ± 3°	PART NAME 品名 1.27mm SCSI II CEN. SOLDER CONNECTOR 68P MALE SPRING LATCHES(STAINLESS STEEL) METAL HOOD(ZINC PLATED NICKEL OVER COPPER) ENTRY HOLE SIZE:φ14mm SELECTIVE GOLD 5U" HP CEN. 68P MALE SOLDER ASSEMBLY ROHS
DWG. 製圖 ABBY	SCALE 比例 參考	UNIT 單位 MM	PART NO. 料號 C0509-68MDLEZ0R
DATE 制表日 2020/06/23	PAGE 張數 1 OF 2	REV. 版次 B	



RoHS Compliant		HSM 玄茂科技股份有限公司 HSUAN MAO TECHNOLOGY CO., LTD.	
APPD. 核准 HELEN	SCALE 比例 參考	TOLERANCE 容許公差 .0 ± 0.30 .00 ± 0.20 ANG. ± 3°	PART NAME 品名 1.27mm SCSI II CEN. SOLDER CONNECTOR 68P MALE SPRING LATCHES(STAINLESS STEEL) METAL HOOD(ZINC PLATED NICKEL OVER COPPER) ENTRY HOLE SIZE:φ14mm SELECTIVE GOLD 5U" HP CEN. 68P MALE SOLDER ASSEMBLY ROHS
DWG. 製圖 ABBY	UNIT 單位 MM	SIZE 紙張尺寸 A 4	PART NO. 料號 C0509-68MDLEZ0R
DATE 制表日 2020/06/23	PAGE 張數 2 OF 2	REV. 版次 B	