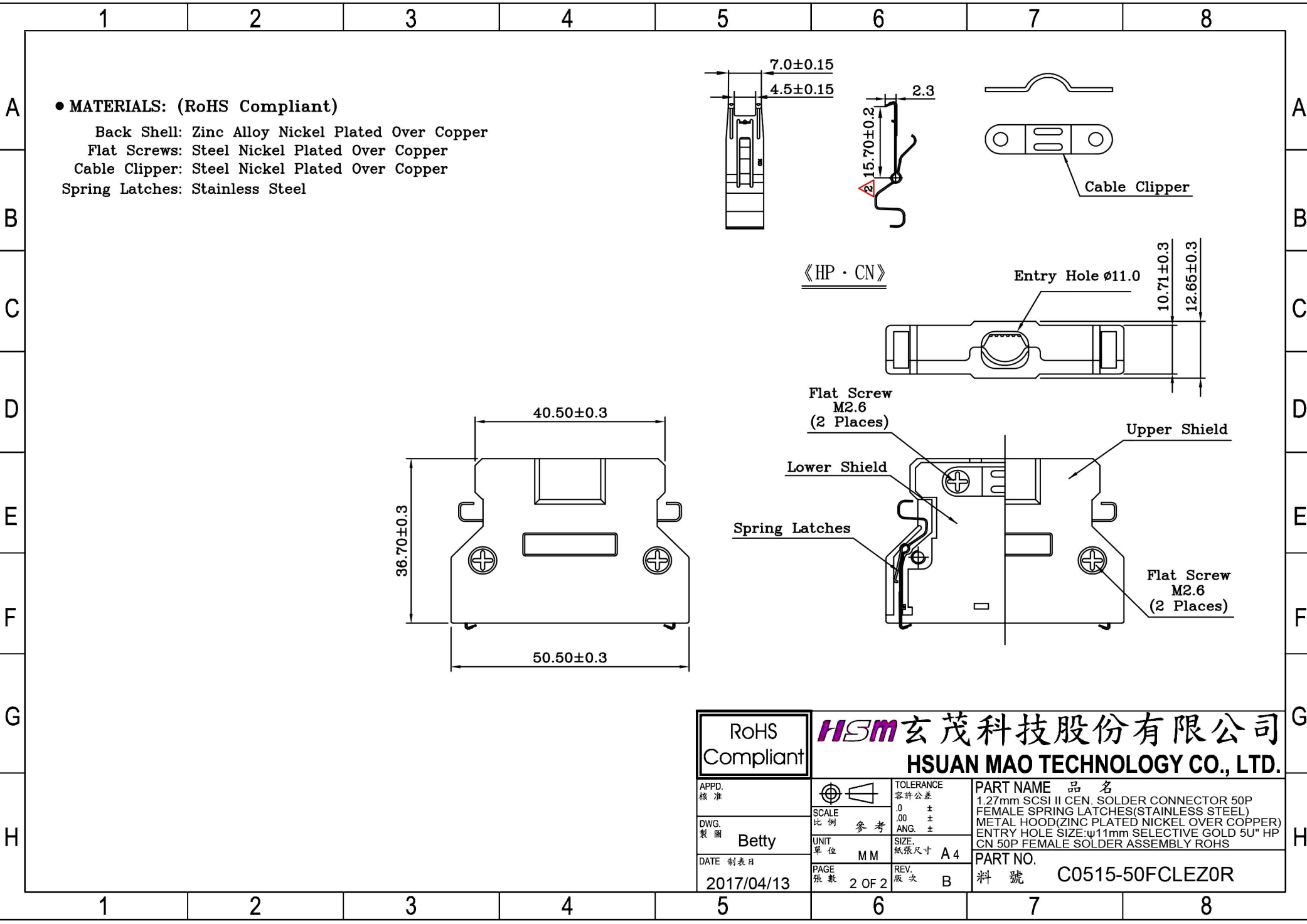


	1	2	3	4	5	6	7	8																	
A	<ul style="list-style-type: none"> ● MATERIALS: (RoHS Compliant) Housing: Plastic Thermoplastic P.B.T UL94V-0 Black Contacts: Phosphor Bronze Gold Selective Plated Front Shell: Steel Nickel Plated Over Copper 								A																
B	<ul style="list-style-type: none"> ● ELECTRICAL CHARACTERISTICS: Contact Current Rating: 0.5 Amp Dielectric Withstanding Voltage: 500V AC Insulation Resistance: >500MΩ/Min Contact Resistance: 35mΩ/Max Operation Temperature: -55°C ~ +85°C 								B																
C									C																
D									D																
E									E																
F									F																
G									G																
H					<table border="1"> <tr> <td colspan="2"> RoHS Compliant </td> <td colspan="2"> 玄茂科技股份有限公司 HSUAN MAO TECHNOLOGY CO., LTD. </td> </tr> <tr> <td> APPD. 核准 </td> <td> </td> <td> TOLERANCE 容許公差 .0 ± .00 ± ANG. ± </td> <td> PART NAME 品名 1.27mm SCSI II CEN. SOLDER CONNECTOR 50P FEMALE SPRING LATCHES(STAINLESS STEEL) METAL HOOD(ZINC PLATED NICKEL OVER COPPER) ENTRY HOLE SIZE:φ11mm SELECTIVE GOLD 5U" HP CN 50P FEMALE SOLDER ASSEMBLY ROHS </td> </tr> <tr> <td> DWG. 製圖 Betty </td> <td> SCALE 比例 參考 </td> <td> UNIT 單位 MM </td> <td> SIZE. 紙張尺寸 A 4 </td> </tr> <tr> <td> DATE 制表日 2017/04/13 </td> <td> PAGE 張數 1 OF 2 </td> <td> REV. 版次 B </td> <td> PART NO. 料號 C0515-50FCLEZ0R </td> </tr> </table>				RoHS Compliant		玄茂科技股份有限公司 HSUAN MAO TECHNOLOGY CO., LTD.		APPD. 核准		TOLERANCE 容許公差 .0 ± .00 ± ANG. ±	PART NAME 品名 1.27mm SCSI II CEN. SOLDER CONNECTOR 50P FEMALE SPRING LATCHES(STAINLESS STEEL) METAL HOOD(ZINC PLATED NICKEL OVER COPPER) ENTRY HOLE SIZE:φ11mm SELECTIVE GOLD 5U" HP CN 50P FEMALE SOLDER ASSEMBLY ROHS	DWG. 製圖 Betty	SCALE 比例 參考	UNIT 單位 MM	SIZE. 紙張尺寸 A 4	DATE 制表日 2017/04/13	PAGE 張數 1 OF 2	REV. 版次 B	PART NO. 料號 C0515-50FCLEZ0R	H
RoHS Compliant		玄茂科技股份有限公司 HSUAN MAO TECHNOLOGY CO., LTD.																							
APPD. 核准		TOLERANCE 容許公差 .0 ± .00 ± ANG. ±	PART NAME 品名 1.27mm SCSI II CEN. SOLDER CONNECTOR 50P FEMALE SPRING LATCHES(STAINLESS STEEL) METAL HOOD(ZINC PLATED NICKEL OVER COPPER) ENTRY HOLE SIZE:φ11mm SELECTIVE GOLD 5U" HP CN 50P FEMALE SOLDER ASSEMBLY ROHS																						
DWG. 製圖 Betty	SCALE 比例 參考	UNIT 單位 MM	SIZE. 紙張尺寸 A 4																						
DATE 制表日 2017/04/13	PAGE 張數 1 OF 2	REV. 版次 B	PART NO. 料號 C0515-50FCLEZ0R																						
	1	2	3	4	5	6	7	8																	



● MATERIALS: (RoHS Compliant)
 Back Shell: Zinc Alloy Nickel Plated Over Copper
 Flat Screws: Steel Nickel Plated Over Copper
 Cable Clipper: Steel Nickel Plated Over Copper
 Spring Latches: Stainless Steel

《HP · CN》

RoHS Compliant		玄茂科技股份有限公司 HSUAN MAO TECHNOLOGY CO., LTD.	
APPD. 核准		TOLERANCE 容許公差	PART NAME 品名
DWG. 製圖	Betty	SCALE 比例 參考	1.27mm SCSI II CEN. SOLDER CONNECTOR 50P FEMALE SPRING LATCHES(STAINLESS STEEL) METAL HOOD(ZINC PLATED NICKEL OVER COPPER) ENTRY HOLE SIZE:φ11mm SELECTIVE GOLD 5U" HP CN 50P FEMALE SOLDER ASSEMBLY ROHS
DATE 製表日	2017/04/13	UNIT 單位 M M	PART NO.
		PAGE 張數 2 OF 2	料號 C0515-50FCLEZ0R
		REV. 版次 B	