

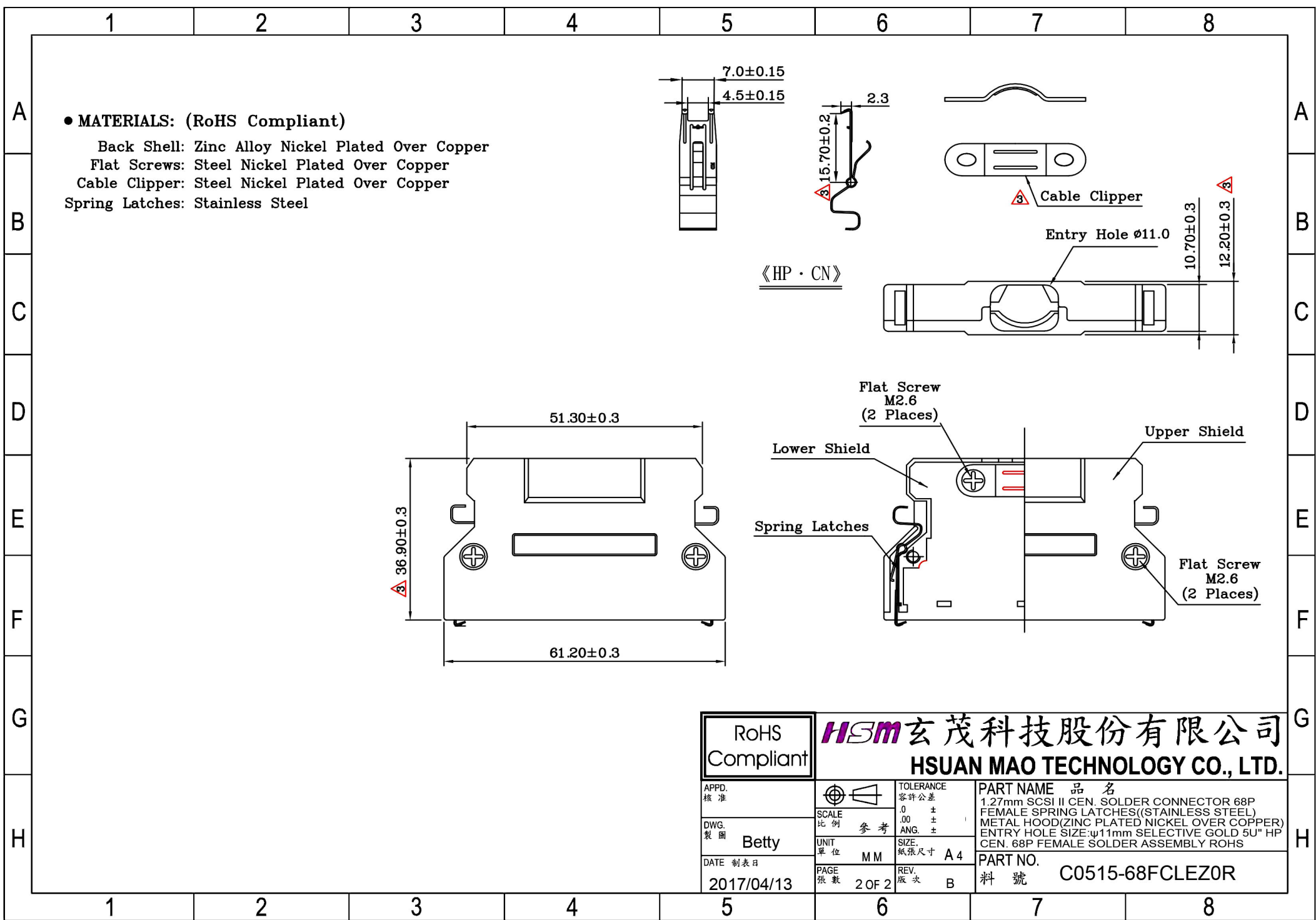
● **MATERIALS: (RoHS Compliant)**

Housing: Plastic Thermoplastic
P.B.T UL94V-0 Black
Contacts: Phosphor Bronze Gold
Selective Plated
Front Shell: Steel Nickel Plated Over Copper

● **ELECTRICAL CHARACTERISTICS:**

Contact Current Rating: 0.5 Amp
Dielectric Withstanding Voltage: 500V AC
Insulation Resistance: >500MΩ/Min
Contact Resistance: 35mΩ/Max
Operation Temperature: -55°C ~ +85°C

<p>RoHS Compliant</p>		<p>HSM 玄茂科技股份有限公司 HSUAN MAO TECHNOLOGY CO., LTD.</p>	
<p>APPD. 核准</p>		<p>TOLERANCE 容許公差</p>	<p>PART NAME 品名</p>
<p>DWG. 製圖</p>	<p>SCALE 比例</p>	<p>0 ± .00 ± ANG. ±</p>	<p>1.27mm SCSI II CEN. SOLDER CONNECTOR 68P FEMALE SPRING LATCHES((STAINLESS STEEL) METAL HOOD(ZINC PLATED NICKEL OVER COPPER) ENTRY HOLE SIZE:φ11mm SELECTIVE GOLD 5U" HP CEN. 68P FEMALE SOLDER ASSEMBLY ROHS</p>
<p>DATE 制表日</p>	<p>UNIT 單位</p>	<p>SIZE. 紙張尺寸</p>	<p>PART NO.</p>
<p>2017/04/13</p>	<p>PAGE 張數</p>	<p>REV. 版次</p>	<p>料號 C0515-68FCLEZ0R</p>
	<p>Betty</p>	<p>M M</p>	<p>1 OF 2</p>



RoHS Compliant		HSM 玄茂科技股份有限公司 HSUAN MAO TECHNOLOGY CO., LTD.	
APPD. 核准		TOLERANCE 容許公差 .0 ± .00 ± ANG. ±	PART NAME 品名 1.27mm SCSI II CEN. SOLDER CONNECTOR 68P FEMALE SPRING LATCHES (STAINLESS STEEL) METAL HOOD (ZINC PLATED NICKEL OVER COPPER) ENTRY HOLE SIZE: ø11mm SELECTIVE GOLD 5U" HP CEN. 68P FEMALE SOLDER ASSEMBLY ROHS
DWG. 製圖	Betty	SCALE 比例 參考 UNIT 單位 M M	PART NO. 料號 C0515-68FCLEZ0R
DATE 製表日	2017/04/13	PAGE 張數 2 OF 2 REV. 版次 B	