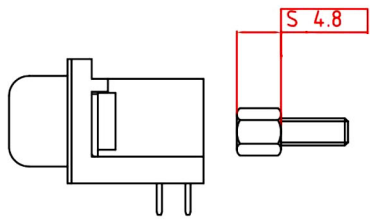
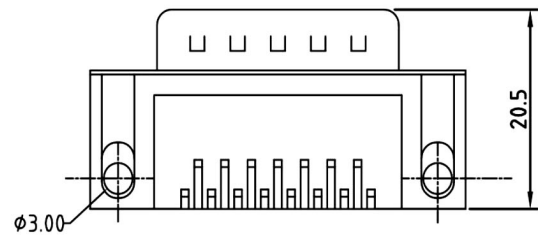


ELECTRICAL CHARACTERISTICS

Contact Current Rating:3Amperes.
 Dielectric Withstanding Voltage:AC 500V at sea level.
 Insulation Resistance:1000Megohms Min.
 Contact Resistance:30Milliohms Max.
 Operation Temperature : -55°C to +105°C.

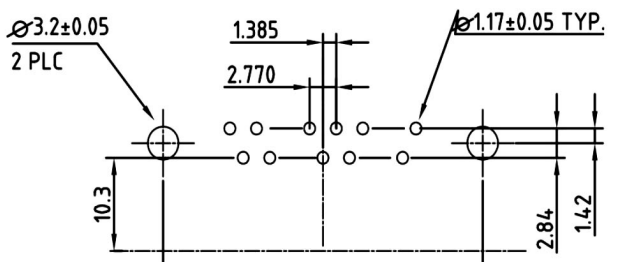
Material

Contact :Copper Alloy.
 Insulator:PBT. (Select LCP /PA9T)
 Shell: SPCC.
 L-Piece: Copper Alloy.
 Screw: Copper Alloy.
 Rivet: Copper Alloy. or Zinc.



Note:

No.	A	B	C
09	16.92	24.99	30.81
15	25.25	33.32	39.14
25	38.96	47.04	53.04
37	55.42	63.50	69.32



Recommend PCB Layout

RoHS Compliant	HSM 玄茂科技股份有限公司		PART NAME 品名 D-SUB PCB RIGHT ANGLE TYPE 9.4mm STAMPED PIN XXP MALE RIVET ONLY ADD SCREWS(4.8*11.8mm) ROHS
	HSUAN MAO TECHNOLOGY CO., LTD.		
APPD. 核准 BETTY	SCALE 比例 参考	Tolerance: ± 0.30	PART NO. C0551-XXMCBXXR
DWG. 製圖 BETTY	UNIT 單位 M M	SIZE. 紙張尺寸 A 4	
DATE 制表日 2011/10/19	PAGE 張數 1 OF 1	REV. 版次 A	