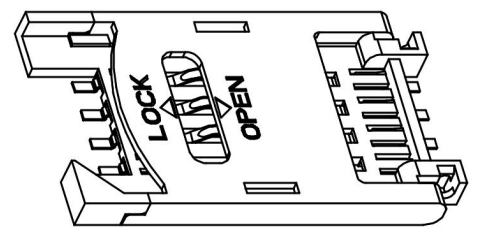


(.XX±0.05)
REFERENCE PCB LAYOUT



SPECIFICATIONS

Housing: Thermoplastic (UL94 V-0)
 Terminal: Phosphor Bronze, Gold Plating On Contact Area,
 Tin Plating On Solder Tail.
 Current Rating: 0.5A Max.
 Dielectric Withstanding Voltage: 500V AC R.M.S. For 1 Minute
 Insulation Resistance: 1000 Megohms Min. At DC 500V
 Contact Resistance: 50 Milliohms Max.
 Durability: 5000 Cycles
 Manual Soldering: 360°C, 3 Sec. Max.
 Vapor Phase: 215°C, 30 Sec. Max.
 IR Reflow: 260°C, 15 Sec. Max.
 Operation Temperature: -25°C To +85°C
 RoHS Compliant

RoHS Compliant		HSM 玄茂科技股份有限公司 HSUAN MAO TECHNOLOGY CO., LTD.	
APPD. 核准 HELEN		TOLERANCE 容許公差 .X ±0.38 .XX ±0.25 ANG. ±1°	PART NAME 品名 SMART/SIM CARD HINGED COVER 8P H:2.5mm SELECTIVE GOLD SMT 90° W/O POST W/O SWITCH ROW P=25.22 BLACK INSULATOR REEL PACKING ROHS
DWG. 製圖 ABBY	SCALE 比例 參考	UNIT 單位 MM	PART NO. 料號 C0612-08DBSBBRR
DATE 制表日 2014/08/08	PAGE 張數 1 OF 2	REV. 版次 A	

1 2 3 4 5 6 7 8

A

B

C

D

E

F

G

H

A

B

C

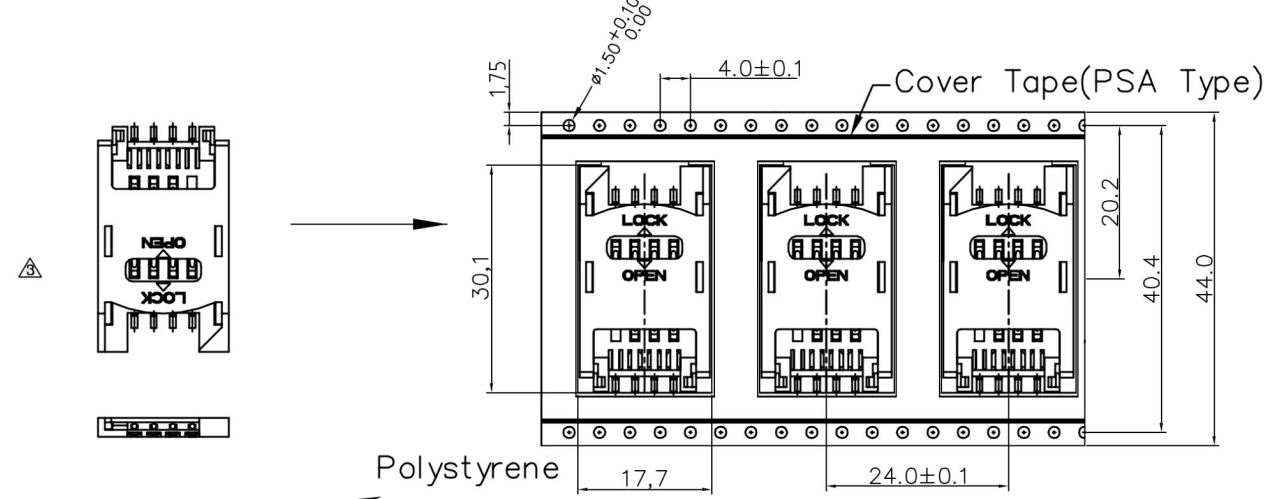
D

E

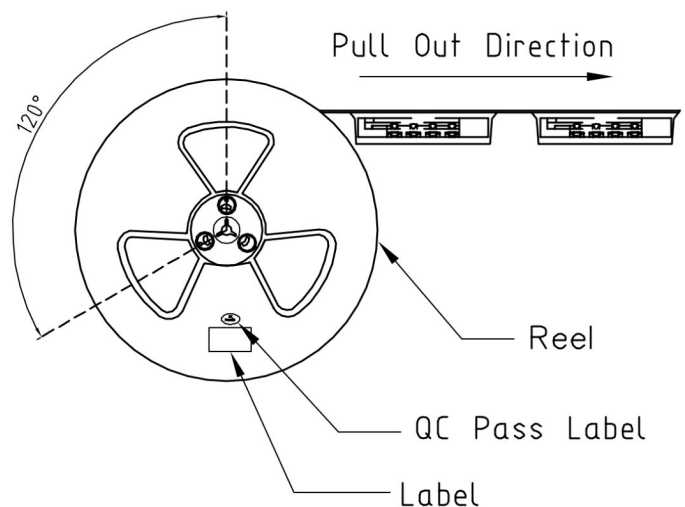
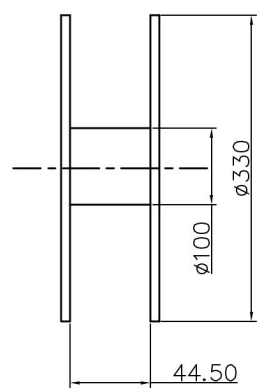
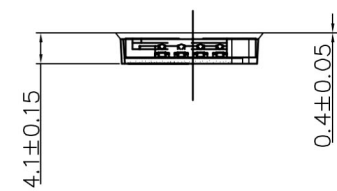
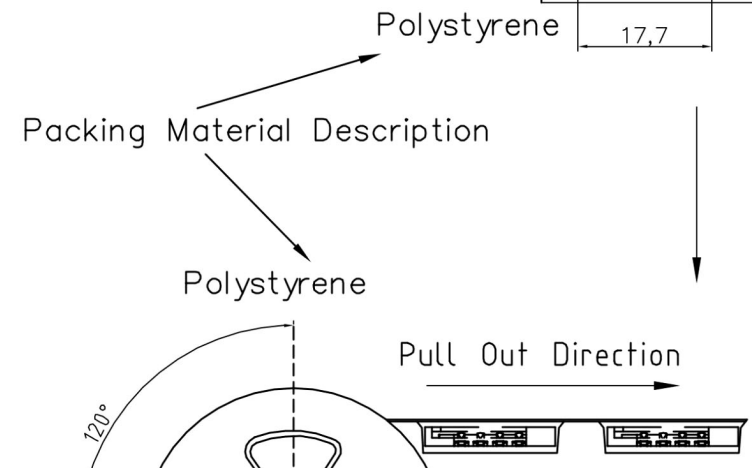
F

G

H



SPECIFICATIONS:
 Reel Size: 330x44.5 mm
 QTY: 650Pcs/Reel
 RoHS Compliant



RoHS Compliant		玄茂科技股份有限公司 HSUAN MAO TECHNOLOGY CO., LTD.	
APPD. 核准 HELEN	SCALE 比例 参考	TOLERANCE 容許公差 .X ±0.20 .XX ±0.10 ANG. ±1°	PART NAME 品名 SMART/SIM CARD HINGED COVER 8P H:2.5mm SELECTIVE GOLD SMT 90° W/O POST W/O SWITCH ROW P=25.22 BLACK INSULATOR REEL PACKING ROHS
DWG. 製圖 ABBY		UNIT 單位 MM	SIZE 紙張尺寸 A 4
DATE 制表日 2014/08/08	PAGE 張數 2 OF 2	REV. 版次 A	

1 2 3 4 5 6 7 8