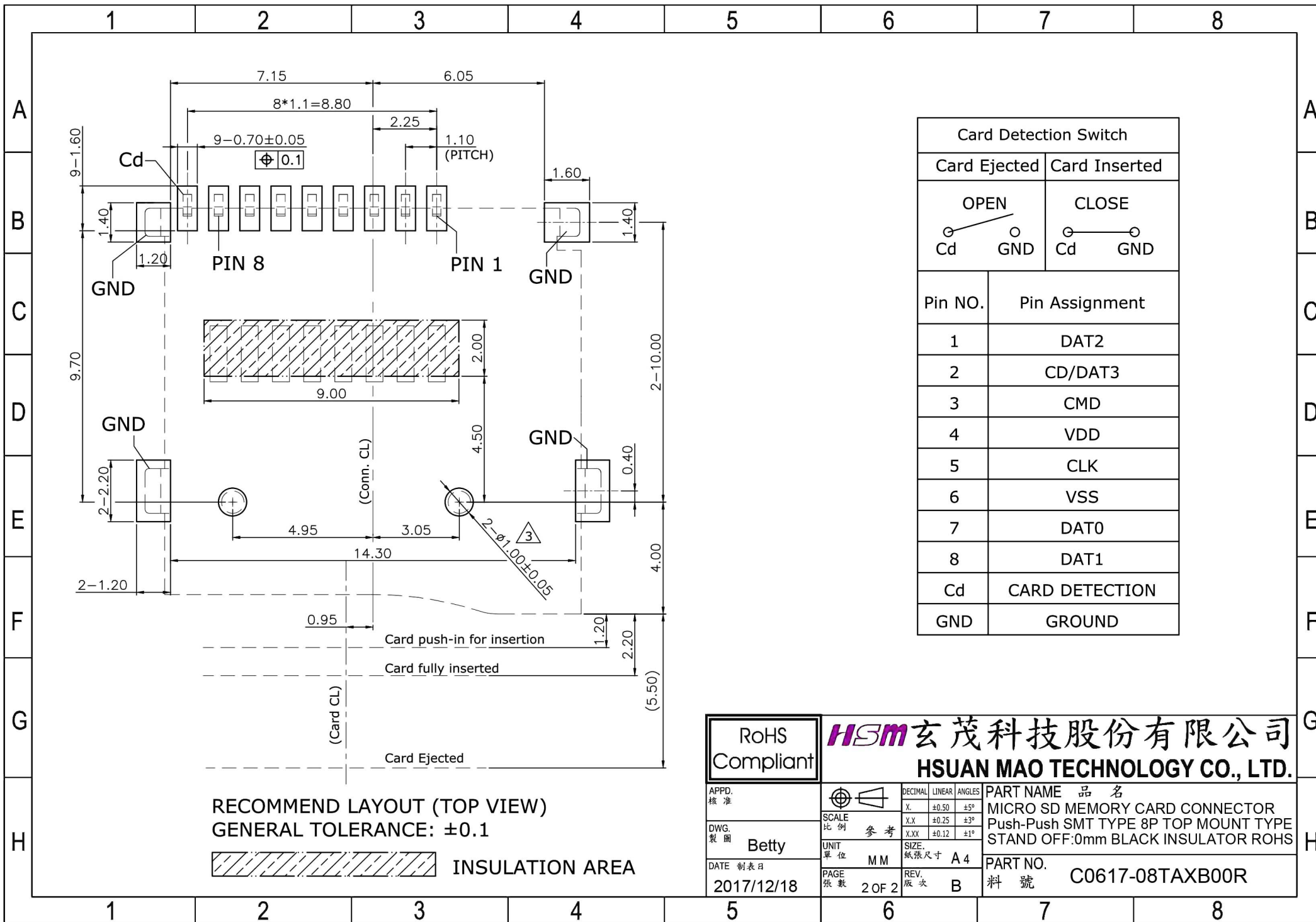


6	Spring	Piano wire
5	Drag Link	SUS304
4	Shell	SUS304R-3/4H, Gold Flash on Solder Area under 12u" Nickel
3	Contact	C5210R-EH, Contact Area 10u" Gold Solder Area Gold Flash, under 50u" Nickel
2	Slider	LCP+35%GF, Black
1	Housing	LCP+35%GF, Black
NO.	PART NAME	DESCRIPTION

DATE CODE:
 5 2 0 2
 ↑ ↑ ↑ ↑
 YEAR (2015) WEEK (1~52) DAY (1~7)

APPD. 核准		<table border="1"> <tr> <th>DECIMAL</th> <th>LINEAR</th> <th>ANGLES</th> </tr> <tr> <td>X.</td> <td>±0.50</td> <td>±5°</td> </tr> <tr> <td>X.X</td> <td>±0.25</td> <td>±3°</td> </tr> <tr> <td>X.XX</td> <td>±0.12</td> <td>±1°</td> </tr> </table>	DECIMAL	LINEAR	ANGLES	X.	±0.50	±5°	X.X	±0.25	±3°	X.XX	±0.12	±1°	PART NAME 品名 MICRO SD MEMORY CARD CONNECTOR Push-Push SMT TYPE 8P TOP MOUNT TYPE STAND OFF:0mm BLACK INSULATOR ROHS
			DECIMAL	LINEAR	ANGLES										
X.	±0.50	±5°													
X.X	±0.25	±3°													
X.XX	±0.12	±1°													
DWG. 製圖	SCALE 比例	UNIT 單位	PAGE 張數												
DATE 制表日	Betty	M M	A 4	REV. 版次											
2017/12/18		1 OF 2	B												
RoHS Compliant		玄茂科技股份有限公司 HSIUAN MAO TECHNOLOGY CO., LTD.		PART NO. 料號											
				C0617-08TAXB00R											



Card Detection Switch	
Card Ejected	Card Inserted
OPEN 	CLOSE
Pin NO.	Pin Assignment
1	DAT2
2	CD/DAT3
3	CMD
4	VDD
5	CLK
6	VSS
7	DAT0
8	DAT1
Cd	CARD DETECTION
GND	GROUND

APPD. 核准 DWG. 製圖 DATE 制表日 2017/12/18	Betty		HSM 玄茂科技股份有限公司 HSUAN MAO TECHNOLOGY CO., LTD.			PART NAME 品名 MICRO SD MEMORY CARD CONNECTOR Push-Push SMT TYPE 8P TOP MOUNT TYPE STAND OFF:0mm BLACK INSULATOR ROHS
			DECIMAL X. ±0.50 ±5°	LINEAR X.X ±0.25 ±3°	ANGLES X.XX ±0.12 ±1°	
		SCALE 比例 參考	PAGE 張數 2 OF 2	REV. 版次 B		