

SPECIFICATION:

- 1. ELECTRICAL
 - 1.1 Current Rating: 0.5A max.
 - 1.2 Voltage Rating: 10VAC/DC
 - 1.3 Contact Resistance: 50mΩ
 - 1.4 Insulation Resistance: 1000MΩ
 - 1.5 Dielectric Withstanding Voltage: 500VAC
- 2. MECHANICAL
 - 2.1 Durability: 2,000 Cycles
 - 2.2 Tray Insertion Force: 10N max.
 - 2.3 Tray Extraction Force: 3N min.
 - 2.4 Contact Normal Force: 20gf min. per pin
- 3. ENVIRONMENTAL
 - 3.1 Operating temperature range: -40°C~+105°C
 - 3.2 Storage temperature range: -40°C~+105°C
- 4. SOLDER ABILITY
 - 4.1 Recommended IR-Reflow Temperature: 260°C

Date code: YWW D
 Y=year 0~9
 WW=Week 1~52
 D=1~7

NO.	PART NAME	DESCRIPTION
5	CAM	Stainless Steel 0.4t
4	BAR	Stainless Steel 0.25t
3	SHELL	Stainless Steel 0.15t, solder area: Gold flash, under plating 12u" Nickel
2	CONTACT	Copper alloy 0.12t, contact area: 30u" Gold plating solder area: Gold flash, under plating 50u" Nickel
1	HOUSING	LCP, UL94V-0, black

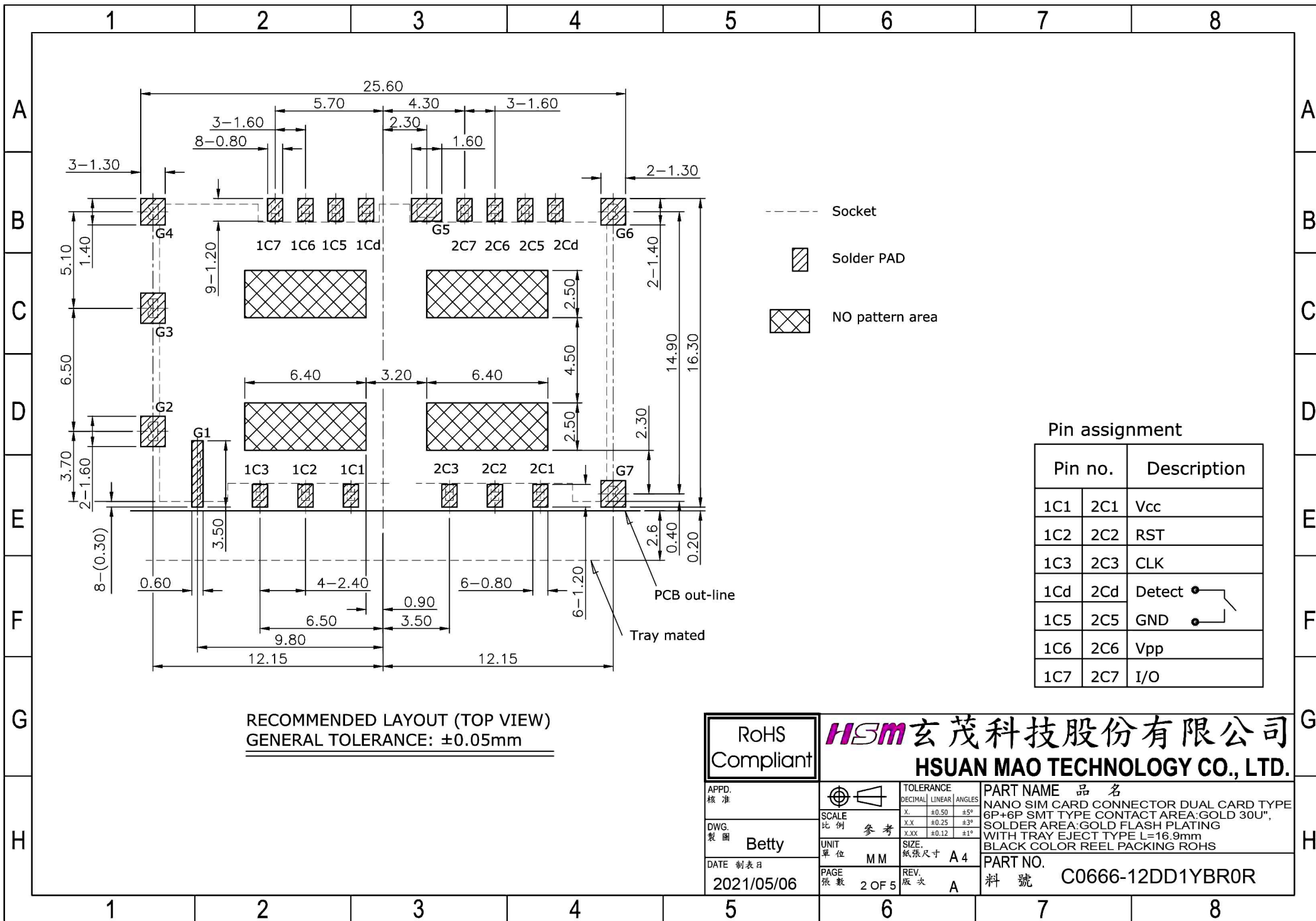
RoHS
Compliant

HSM 玄茂科技股份有限公司
HSUAN MAO TECHNOLOGY CO., LTD.

APPD. 核准
 Betty
 DWG. 製圖
 DATE 制表日
 2021/05/06

SCALE 比例 參考
 UNIT 單位 M M
 PAGE 張數 1 OF 5
 TOLERANCE DECIMAL LINEAR ANGLES
 X. ±0.50 ±5°
 X.X ±0.25 ±3°
 X.XX ±0.12 ±1°
 SIZE. 紙張尺寸 A 4
 REV. 版次 A

PART NAME 品名
 NANO SIM CARD CONNECTOR DUAL CARD TYPE
 6P+6P SMT TYPE CONTACT AREA: GOLD 30U",
 SOLDER AREA: GOLD FLASH PLATING
 WITH TRAY EJECT TYPE L=16.9mm
 BLACK COLOR REEL PACKING ROHS
 PART NO.
 料號 C0666-12DD1YBR0R



RoHS
Compliant

HSM 玄茂科技股份有限公司
HSUAN MAO TECHNOLOGY CO., LTD.

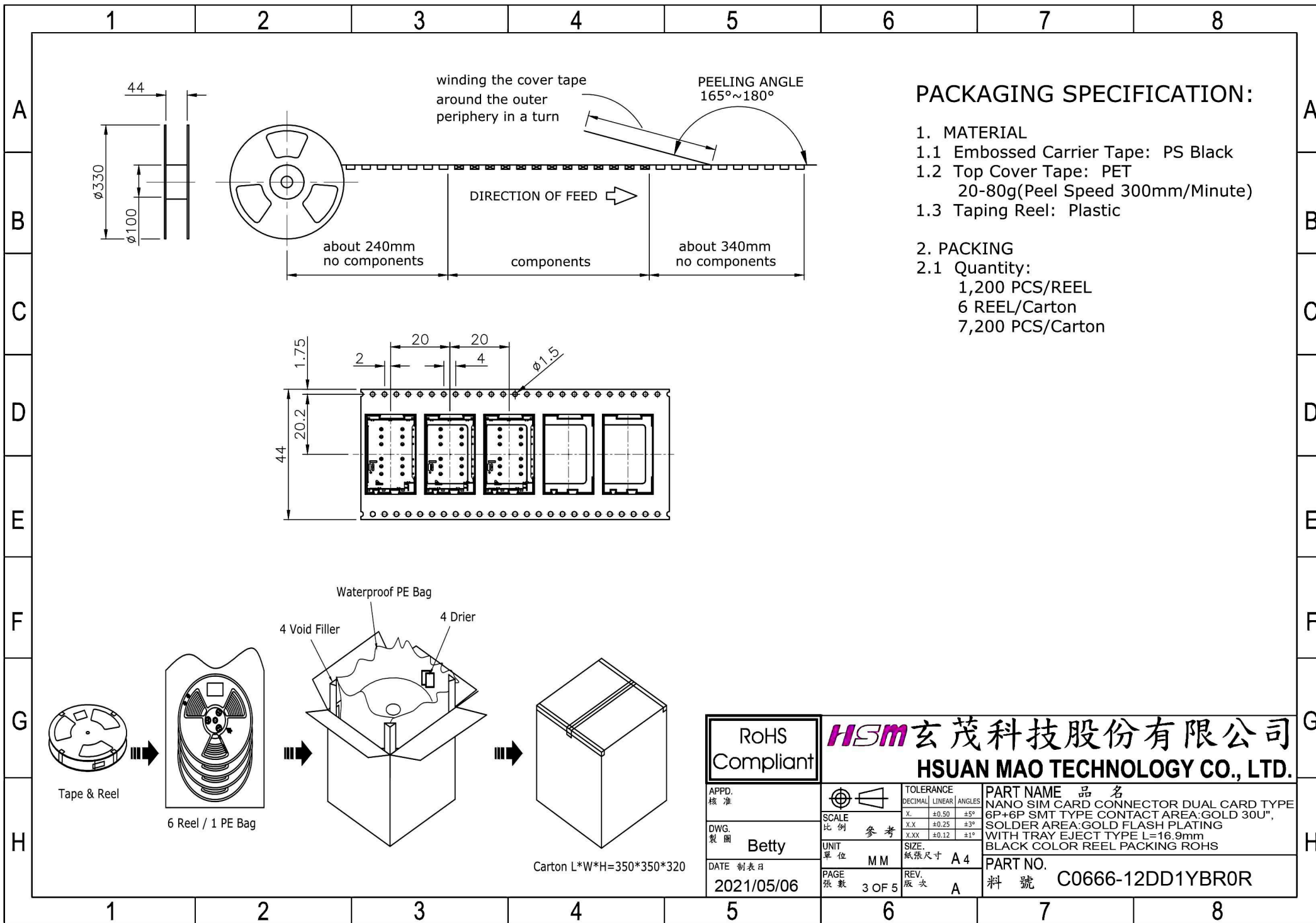
APPD.
核准
Betty
DATE 制表日
2021/05/06

SCALE
比例 参考
UNIT
單位 MM
PAGE
張數 2 OF 5

TOLERANCE
DECIMAL LINEAR ANGLES
X. ± 0.50 $\pm 5^\circ$
X.X ± 0.25 $\pm 3^\circ$
X.XX ± 0.12 $\pm 1^\circ$
SIZE.
紙張尺寸 A 4
REV.
版次 A

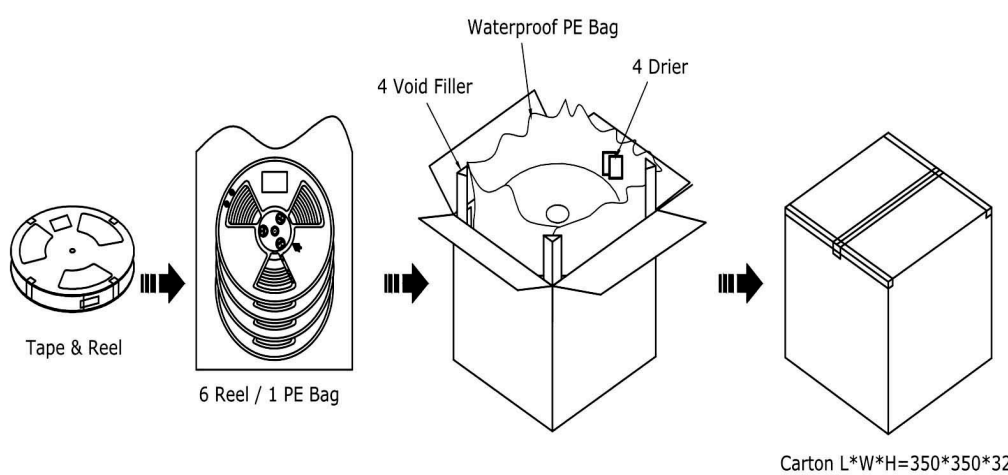
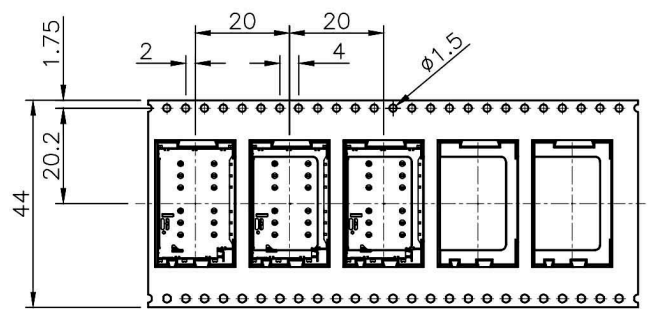
PART NAME 品名
NANO SIM CARD CONNECTOR DUAL CARD TYPE
6P+6P SMT TYPE CONTACT AREA: GOLD 30U",
SOLDER AREA: GOLD FLASH PLATING
WITH TRAY EJECT TYPE L=16.9mm
BLACK COLOR REEL PACKING ROHS

PART NO.
料號 C0666-12DD1YBR0R

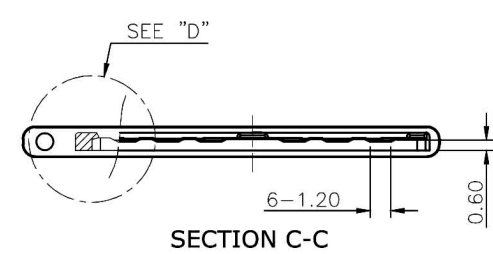
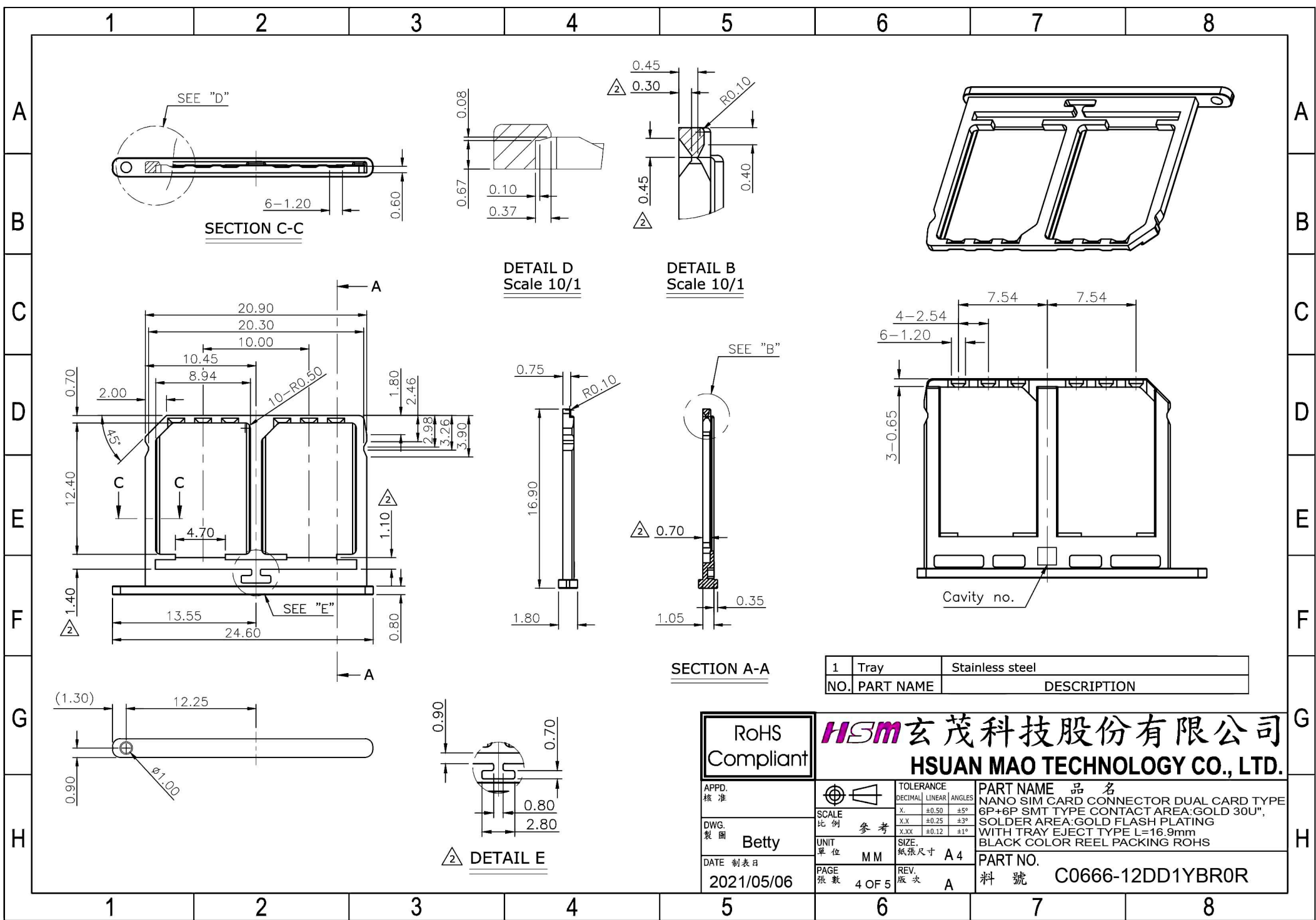


PACKAGING SPECIFICATION:

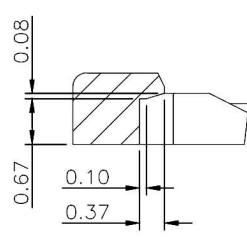
- 1. MATERIAL
 - 1.1 Embossed Carrier Tape: PS Black
 - 1.2 Top Cover Tape: PET
20-80g(Peel Speed 300mm/Minute)
 - 1.3 Taping Reel: Plastic
- 2. PACKING
 - 2.1 Quantity:
1,200 PCS/REEL
6 REEL/Carton
7,200 PCS/Carton



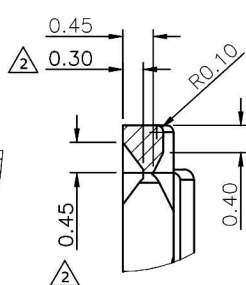
RoHS Compliant		HSM 玄茂科技股份有限公司 HSUAN MAO TECHNOLOGY CO., LTD.	
APFD. 核准		TOLERANCE DECIMAL LINEAR ANGLES	PART NAME 品名 NANO SIM CARD CONNECTOR DUAL CARD TYPE 6P+6P SMT TYPE CONTACT AREA:GOLD 30U", SOLDER AREA:GOLD FLASH PLATING WITH TRAY EJECT TYPE L=16.9mm BLACK COLOR REEL PACKING ROHS
DWG. 製圖	Betty	SCALE 比例 參考	PART NO. 料號 C0666-12DD1YBR0R
DATE 制表日 2021/05/06	PAGE 張數 3 OF 5	UNIT 單位 MM	REV. 版次 A



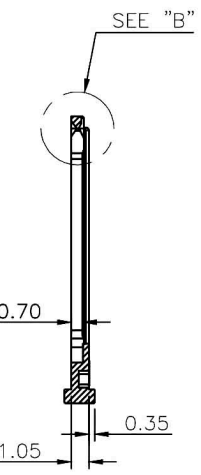
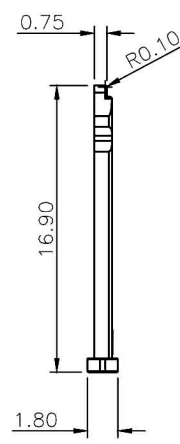
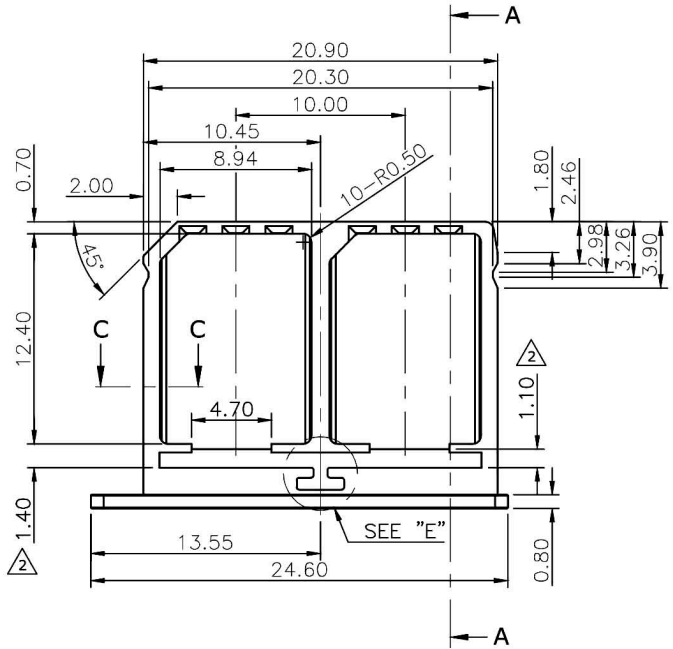
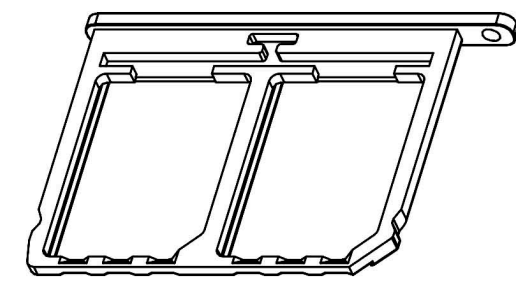
SECTION C-C



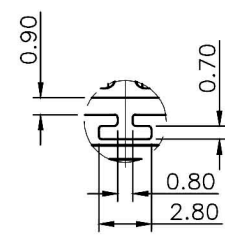
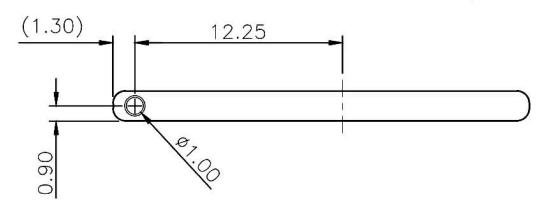
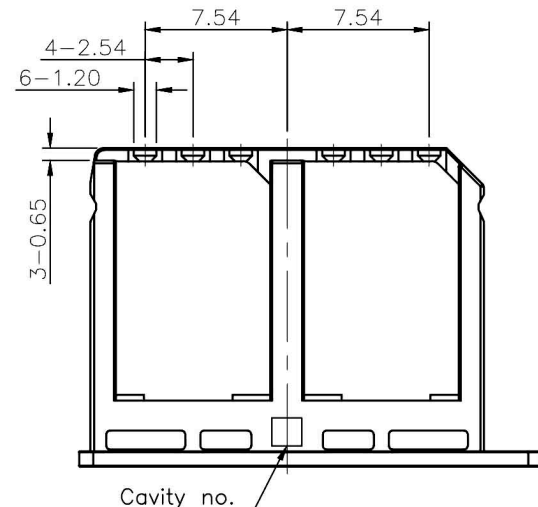
DETAIL D
Scale 10/1



DETAIL B
Scale 10/1



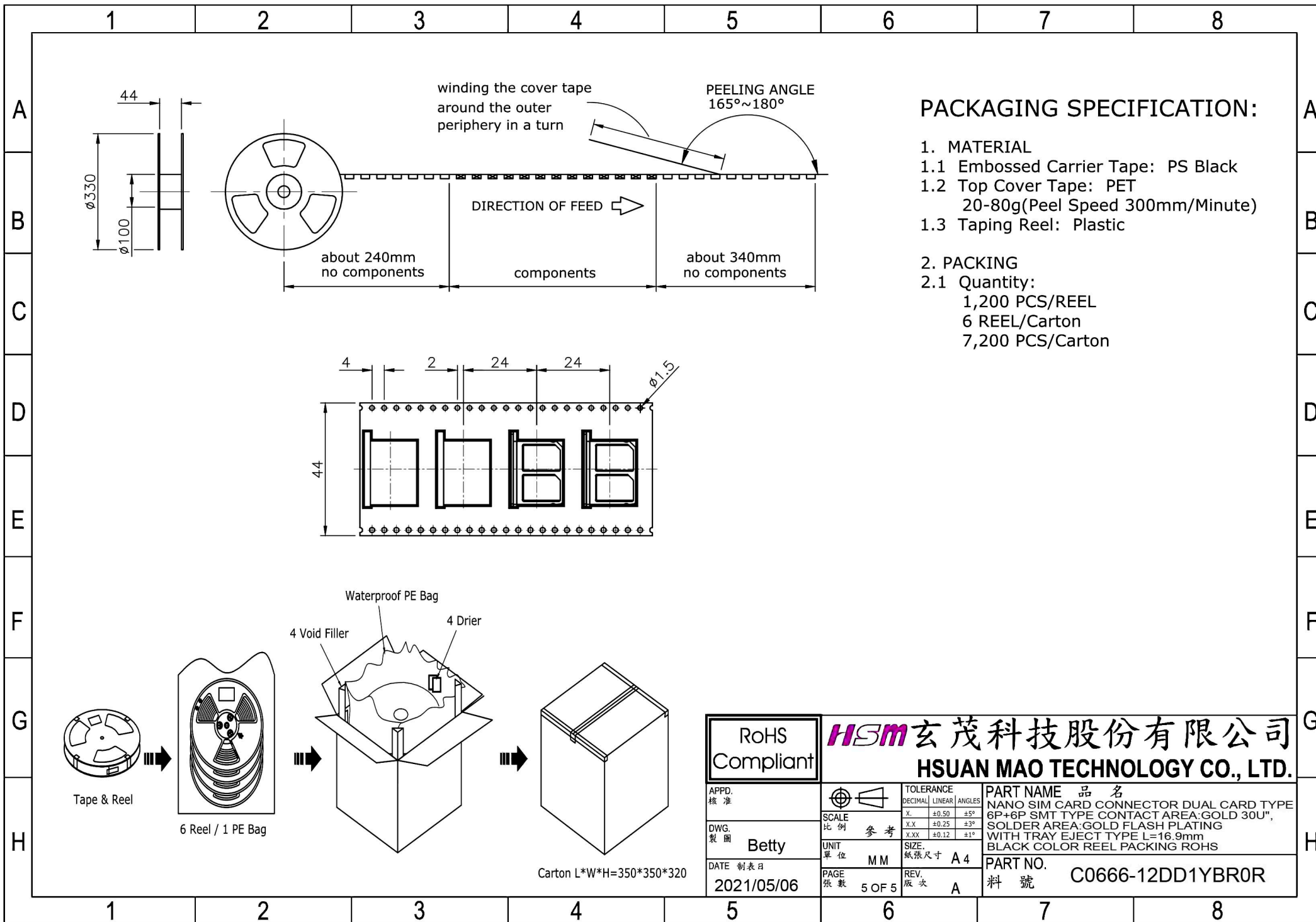
SECTION A-A



DETAIL E

1	Tray	Stainless steel
NO.	PART NAME	DESCRIPTION

RoHS Compliant		HSM 玄茂科技股份有限公司 HSUAN MAO TECHNOLOGY CO., LTD.	
APPD. 核准	SCALE 比例 参考	TOLERANCE DECIMAL LINEAR ANGLES	PART NAME 品名
DWG. 製圖 Betty		X. ±0.50 ±5°	NANO SIM CARD CONNECTOR DUAL CARD TYPE
DATE 制表日 2021/05/06	UNIT 單位 MM	X.X ±0.25 ±3°	6P+6P SMT TYPE CONTACT AREA:GOLD 30U",
	PAGE 張數 4 OF 5	X.XX ±0.12 ±1°	SOLDER AREA:GOLD FLASH PLATING
		SIZE. 紙張尺寸 A 4	WITH TRAY EJECT TYPE L=16.9mm
		REV. 版次 A	BLACK COLOR REEL PACKING ROHS
			PART NO. 料號 C0666-12DD1YBR0R



PACKAGING SPECIFICATION:

1. MATERIAL

- 1.1 Embossed Carrier Tape: PS Black
- 1.2 Top Cover Tape: PET
20-80g(Peel Speed 300mm/Minute)
- 1.3 Taping Reel: Plastic

2. PACKING

- 2.1 Quantity:
1,200 PCS/REEL
6 REEL/Carton
7,200 PCS/Carton

RoHS Compliant		HSM 玄茂科技股份有限公司 HSUAN MAO TECHNOLOGY CO., LTD.	
APPD. 核准	SCALE 比例 参考	TOLERANCE 公差	
DWG. 製圖 Betty		DECIMAL 小数	ANGLES 角度
DATE 制表日 2021/05/06	UNIT 單位 MM	X. ± 0.50	$\pm 5^{\circ}$
	PAGE 張數 5 OF 5	X.X ± 0.25	$\pm 3^{\circ}$
		X.XX ± 0.12	$\pm 1^{\circ}$
		PART NAME 品名 NANO SIM CARD CONNECTOR DUAL CARD TYPE 6P+6P SMT TYPE CONTACT AREA:GOLD 30U", SOLDER AREA:GOLD FLASH PLATING WITH TRAY EJECT TYPE L=16.9mm BLACK COLOR REEL PACKING ROHS	
		PART NO. 料號 C0666-12DD1YBR0R	