

Material:

Housing: Thermoplastic Polyester Glass Filled UL94V-0.

Contacts: Copper Alloy

Electrical Characteristics:

Current Rating: 2 AMP.

Dielectric Withstanding Voltage: AC 1000V For 1 minute.

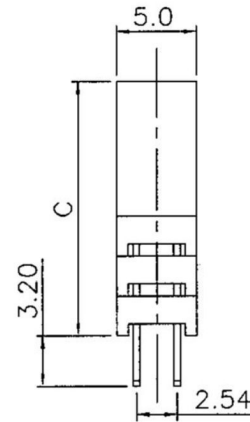
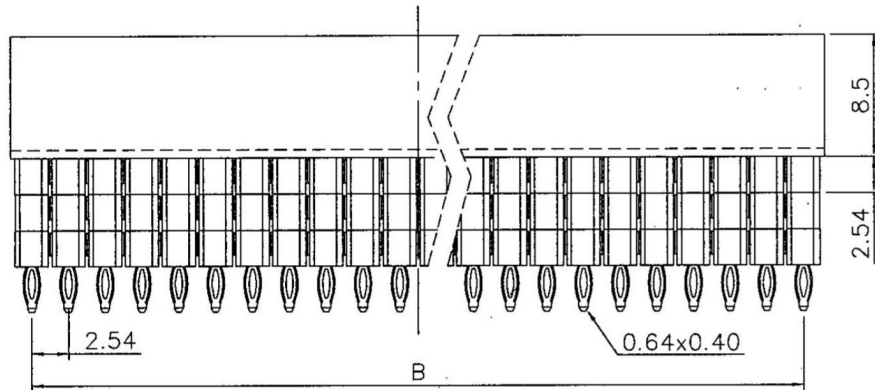
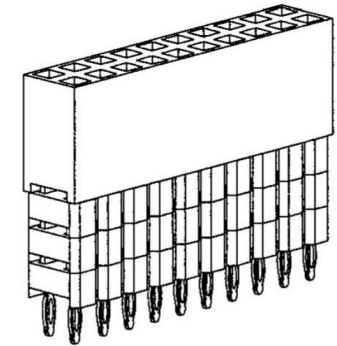
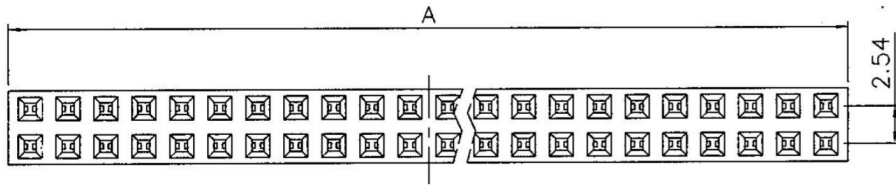
Insulator Resistance: 1000MΩmin. at DC 500V.

Contact Resistance: 20mΩmax. at DC 100mA.

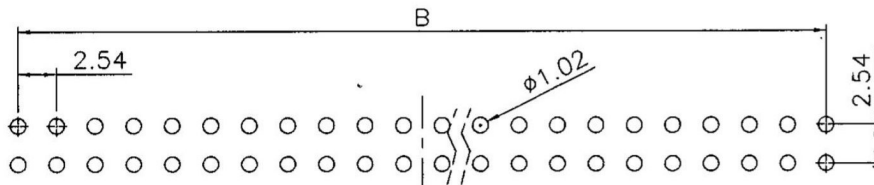
Operating Temperature: -55°C~+105°C.

***RoHS Compliant**

Insertion Depth: 2.55mm to 5.70mm.



Position Dimension	4 Thru 80			
A	2.54 X No. of Positions/2 +0.4			
B	2.54 X No. of Positions/2 -2.54			
C	1	2	3	4
(Code)	11.05	13.59	16.13	18.67



P.C. Board Layout
(Tolerance: ±0.05)

RoHS
Compliant

HSM 玄茂科技股份有限公司
HSUAN MAO TECHNOLOGY CO., LTD.

APPD. 核准 BETTY

DWG. 製圖 BETTY

DATE 制表日 2010/10/26



SCALE 比例 參考

UNIT 單位 M M

PAGE 張數 1 OF 1

TOLERANCE
x = ±0.5
.x = ±0.25
.xx = ±0.15

SIZE 紙張尺寸 A 4

REV. 版次 A

PART NAME 品名
2.54mm FEMALE HEADER DUAL ROW H:8.5mm 2XXXP
STRAIGHT TYPE PRESS FIT TYPE GOLD FLASH
PLATING STACK 1 INSULATOR PIN LENGTH=3.2mm

PART NO. 料號 C2820-XXBSGHX0R