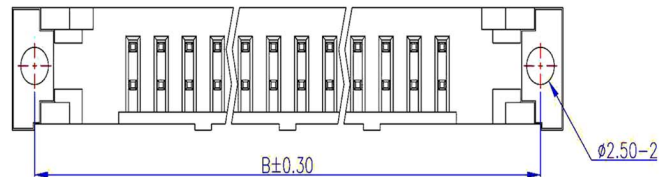
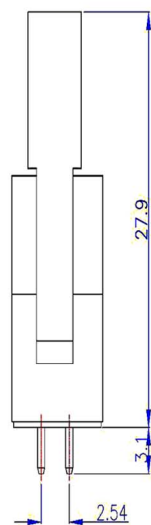
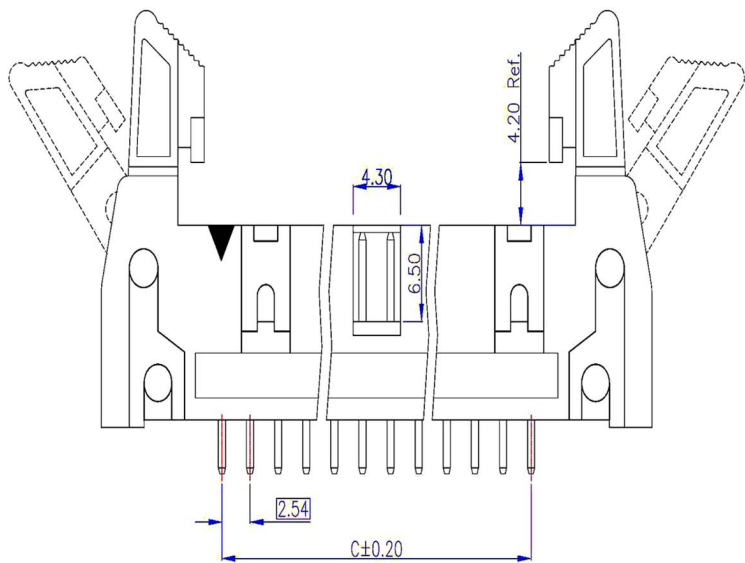
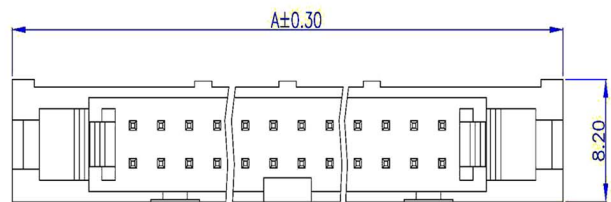


1 2 3 4 5 6 7 8

A  
B  
C  
D  
E  
F  
G  
H



**Material and Finish**

1. Housing: PBT (UL94V-0), Black.
2. Terminal: Sq. 0.64mm Copper Alloy, Gold Plating.

**Electrical Characteristics**

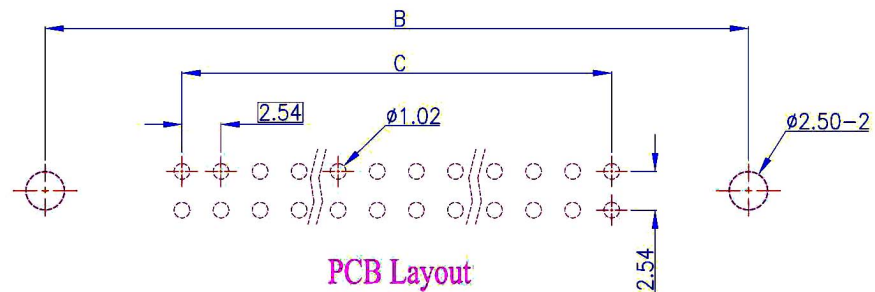
1. Current Rating: 3.0 Amp. Max..
2. Dielectric Withstand Voltage:  
1000V AC RMS for 60Seconds.
3. Insulation Resistance:  
1000M Ohms Min. at 1000V DC.

**Mechanical Characteristics**

1. Operating Temperature: -55°C ~ +105°C

**Dimensions**

Pos.	A	B	C
10	32.00	27.94	10.16
12	34.54	30.48	12.70
14	37.08	33.02	15.24
16	39.62	35.56	17.78
20	44.70	40.64	22.86
24	49.78	45.72	27.94
26	52.32	48.26	30.48
30	57.40	53.34	35.56
34	62.48	58.42	40.64
40	70.10	66.04	48.26
50	82.80	78.74	60.96



PCB Layout  
(Top View)

RoHS Compliant		<b>HSM</b> 玄茂科技股份有限公司 HSUAN MAO TECHNOLOGY CO., LTD.	
APPD. 核准	SCALE 比例 参考	TOLERANCE 容許公差 .0 ± 0.30 .00 ± 0.20 ANG. ± 3°	PART NAME 品名 FULLY SHROUDED HEADER ASSEMBLY 2.54mm X 2.54mm XXP SHORT LOCK STRAIGHT TYPE GOLD FLASH PLATING BLACK COLOR ROHS
DWG. 製圖 Betty	UNIT 單位 M M	SIZE. 紙張尺寸 A 4	PART NO. 料號 C3000-XXSSGB00R
DATE 制表日 2014/06/17	PAGE 張數 1 OF 1	REV. 版次 A	

1 2 3 4 5 6 7 8