

MATERIAL

INSULATOR: GLASS-REINFORCED THERMOPLASTIC.
 CONTACT: COPPER ALLOY.
 PLATING: MATING AREA - GOLD FLASH GOLD OVER NICKEL.
 SOLDER AREA - TIN OVER NICKEL.

ELECTRICAL

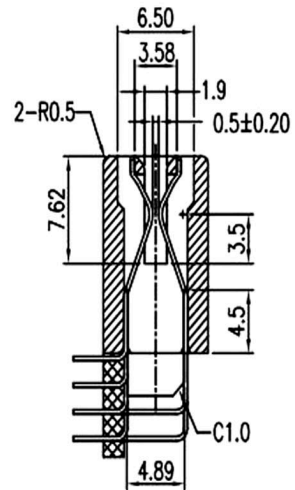
VOLTAGE RATING: 250 VAC RMS.
 CURRENT RATING: 1 AMP.
 DIELECTRIC WITHSTANDING VOLTAGE: 500 VAC RMS 60Hz FOR 1 MINUTE.
 INSULATION RESISTANCE: 1000 MEGOHMS MIN AT 500 VDC.
 CONTACT RESISTANCE: 30 MILLIOHMS MAX.

MECHANICAL

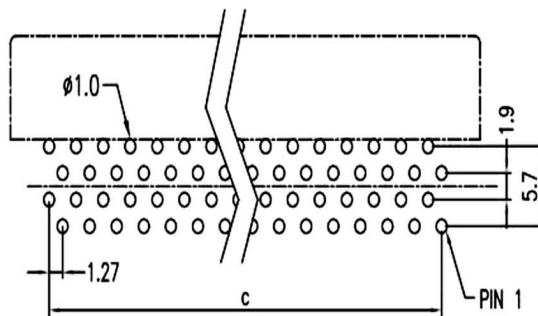
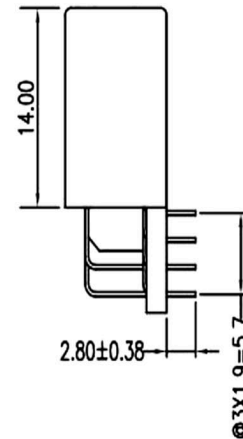
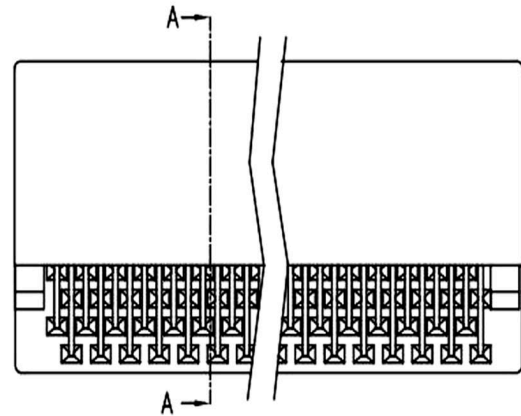
RETENTION FORCE: 460 GRAMS MIN PER CONTACT.
 INSERTION FORCE: 230 GRAMS MAX PER CONTACT PAIR.
 WITHDRAWAL FORCE: 15 GRAMS MIN PER CONTACT PAIR.

ENVIRONMENTAL

TEMPERATURE RANGE: -55°C TO +85°C.



SECTION A-A



RECOMMENDED PCB LAYOUT (TOP VIEW)

RoHS Compliant		玄茂科技股份有限公司 HSUAN MAO TECHNOLOGY CO., LTD.	
APPD. 核准	SCALE 比例	UNLESS OTHERWISE SPECIFIED	PART NAME 品名
DWG. 製圖	Betty	0-10 ±0.2	1.27mm EDGE CARD CONNECTOR 80PIN 90°
DATE 制表日	2021/04/01	10-30 ±0.3	WITHOUT LOCATING PEG WITHOUT EAR
		30-100 ±0.4	SELECTIVE GOLD PLATING DIP PIN LENGTH:2.8mm
		100-300 ±0.5	BLACK COLOR MATERIAL:NY66 ROHS
		OVER 300 ±0.6	PART NO.
		ANGULAR ±0.5°	料號 C3606-80RNSA00R
		SIZE 紙張尺寸	
		A 4	
		REV. 版次	
		A	
		PAGE 張數	
		1 OF 1	