

**Material:**

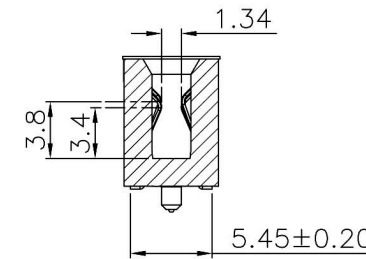
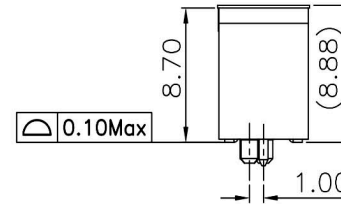
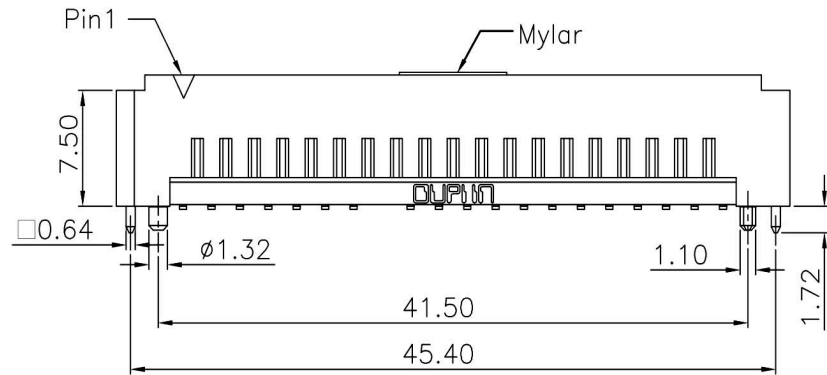
Housing: High Temperature Plastic UL94V-0.  
Contacts: Copper Alloy.

**Electrical Characteristics:**

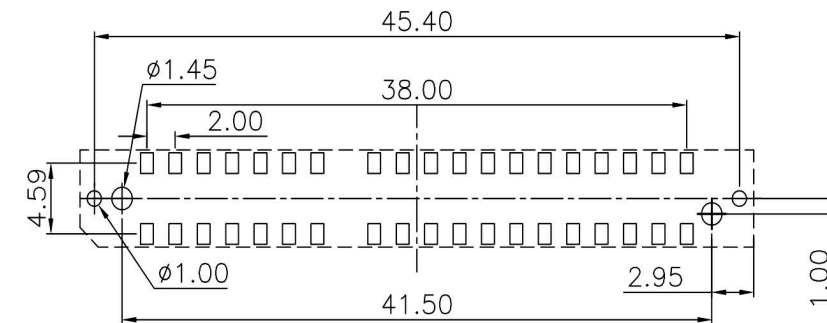
Current Rating: 2.5 AMP.  
Dielectric Withstanding Voltage: AC 500V For 1 minute.  
Insulator Resistance: 5000MΩ min. at DC 500V.  
Contact Resistance: 5.8mΩ max. at DC 100mA.  
Operating Temperature: -55°C~+125°C.

**\*RoHS Compliant**

Insertion Depth: 3.15mm.  
Mates With: 2.36±0.05mm Thick Edge Card.  
Speed: 28+Gbps @-3dB.



SECTION A-A



P.C. Board Layout  
(Tolerance ±0.05)

RoHS Compliant		HSM 玄茂科技股份有限公司 HSUAN MAO TECHNOLOGY CO., LTD.	
APPD. 核准	SCALE 比例 参考	TOLERANCE x = ±0.50 .x = ±0.25 .xx = ±0.15	PART NAME 品名 2.0MM EDGE CARD CONNECTOR 40P(2X20PIN) SMT TYPE W/ PLASTIC POSTS & METAL POSTS W/ FRONT KEY WITH FILM BEIGE COLOR ROHS
DWG. 製圖 Betty	UNIT 單位 MM	SIZE 紙張尺寸 A 4	PART NO. 料號 C3641-40YXYXC0R
DATE 制表日 2020/12/31	PAGE 張數 1 OF 1	REV. 版次 A	