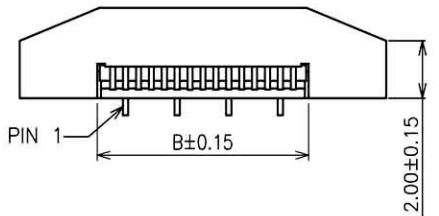


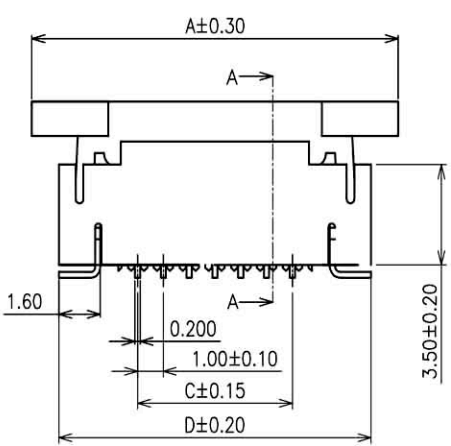
1 2 3 4 5 6 7 8

A

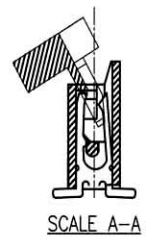


B

C

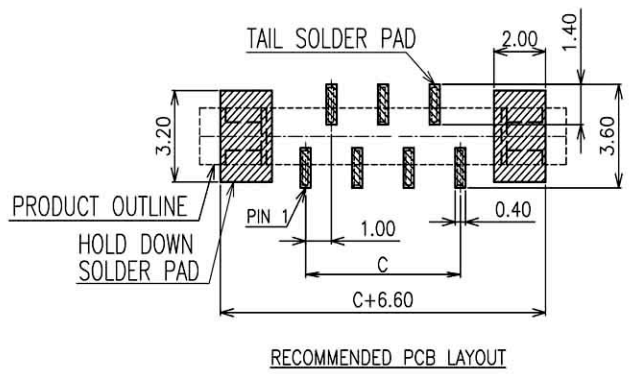


D



E

F



G

H

1 2 3 4 5 6 7 8

A

B

C

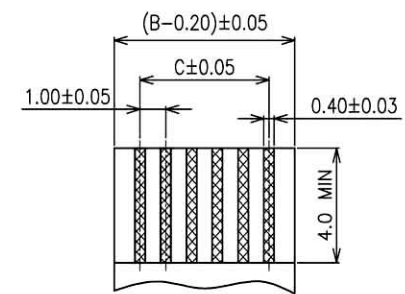
D

E

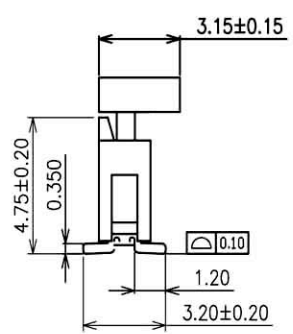
F

G

H



FPC/FFC T=0.30±0.03



■ DIMENSIONAL INFORMATION

PIN	Dimension			
	A	B	C	D
4	11.20	5.20	3.00	9.10

NOTE:

■ MATERIAL

HOUSING:HIGH-TEMP. THERMOPLASTIC. UL 94V-0.
 ACTUATOR:HIGH-TEMP. THERMOPLASTIC. UL 94V-0.
 CONTACT:PHOSPHOR BRONZE.
 PLATING:TIN PLATED OVER NICKEL.
 HOLDDOWN:BRASS. PLATING:TIN PLATED OVER NICKEL.

■ ELECTRICAL

CURRENT:0.5A MAX.
 DIELECTRIC WITHSTANDING VOLTAGE:250V AC MIN.
 CONTACT RESISTANCE:30mΩ MAX.
 INSULATION RESISTANCE:100MΩ MIN.

■ ENVIRONMENTAL

TEMPERATURE:-25°C TO +85°C

■ WITH 'A', 'B', 'C', 'D' "MAJOR DIMENSION FOR QC."

RoHS
Compliant

HSM 玄茂科技股份有限公司
HSUAN MAO TECHNOLOGY CO., LTD.

APPD. 核准
 DWG. 製圖 *Helen*
 DATE 制表日
 2019/12/5

SCALE 比例 參考
 UNIT 單位 MM
 PAGE 張數 1 OF 1

TOLERANCE 容許公差
 0 ± 0.35
 .00 ± 0.25
 ANG. ± 5°
 SIZE 紙張尺寸 A4
 REV. 版本 A

PART NAME 品名
 FPC/FFC ZIF 1.0mm SMT VERTICAL TYPE
 NORMAL LATOUT 4PIN REEL PACKING
 TIN PLATING IVORY COLOR ROHS

PART NO.
 料號 C3946-04VTRI00R