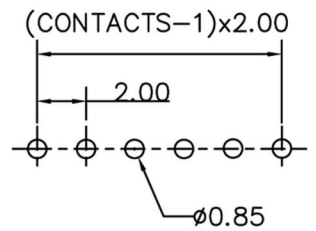
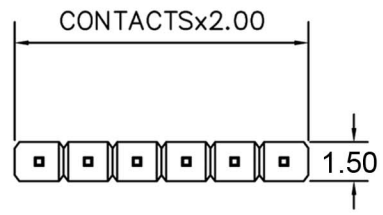


1 2 3 4 5 6 7 8

A

A

MATERIAL  
 HOUSING : THERMOPLASTIC UL94V-0  
 CONTACT : COPPER ALLOYS



SPECIFICATION  
 CURRENT: 1A  
 OPERATING TEMPERATURE: -55°C TO +105°C  
 CONTACT RESISTANCE : 20 MILLIOHMS MAX  
 INSULATION RESISTANCE : 5000 MEGAOHMS MIN  
 DIELECTRIC STRENGTH : 1000 VAC MIN

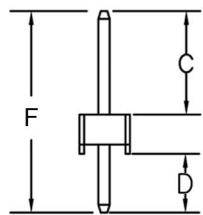
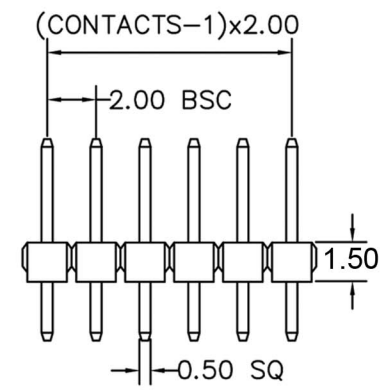
B

B

C

C

RECOMMENDED P.C.B LAYOUT



CONTACTS	1X21
1X2	1X22
1X3	1X23
1X4	1X24
1X5	1X25
1X6	1X26
1X7	1X27
1X8	1X28
1X9	1X29
1X10	1X30
1X11	1X31
1X12	1X32
1X13	1X33
1X14	1X34
1X15	1X35
1X16	1X36
1X17	1X37
1X18	1X38
1X19	1X39
1X20	1X40

D

D

E

E

F

F

F: 8.20 mm C: 3.90 mm D: 2.80 mm

G

G

APPD. 核准 Hedy DWG. 製圖 Hedy DATE 制表日 2011/05/12	RoHS Compliant	<b>HSM</b> 玄茂科技股份有限公司 HSIUAN MAO TECHNOLOGY CO., LTD.		
	SCALE 比例 參考	TOLERANCE 容許公差 .0 ± .00 ± ANG. ±	PART NAME 品名 2.0mm PIN HEADER SINGLE ROW 1XXP STRAIGHT TYPE H=1.5mm FULL GOLD PLATING (C=3.9mm D=2.8mm)ROHS LOW-LEAD	
	UNIT 單位 MM	SIZE. 紙張尺寸 A 4	PART NO. 料號 C6115-XXASGAS0R	
	PAGE 張數 1 / 1	REV. 版次 A		

H

H

1 2 3 4 5 6 7 8