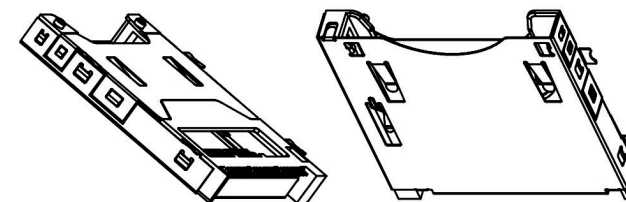


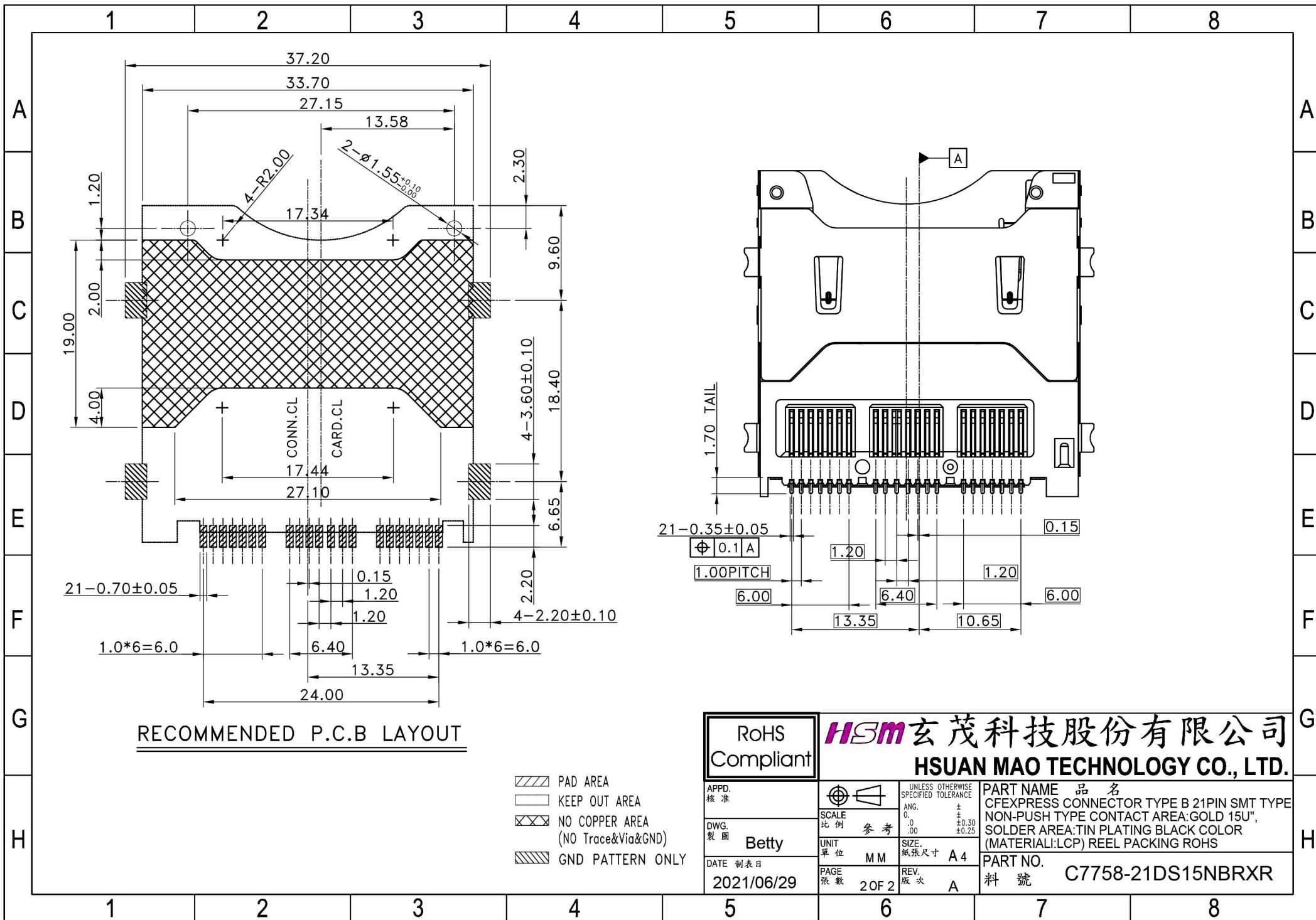
**SPECIFICATION**

Material:  
 Insulator: LCP, rated UL94V-0, Black.  
 Contacts: C7025 TM03  
 Solder tail 80u" Min. Matte Tin,  
 Contact area 15u" Min. Au.Over Nickel 50u" Min.  
 Top Shell: SUS304 3/4H. Bottom Shell: SUS304 1/2H.  
 Nickel 30u" Min.(C7758-21DS15NBRNR)  
 Top Shell: SUS304 3/4H. Bottom Shell: SUS304 1/2H.  
 Solder tail Goldflash Over Nickel 30u"Min.(C7758-21DS15NBRGR)  
 Electrical Characteristics:  
 Current rating : 1.0 A.Min.per pin.  
 Operating Temperature: -25°C~+85°C.  
 Insulation resistance: 1000M ohms Min. at 500VDC for 1ms  
 Dielectric withstanding voltage:500 VAC/1minute.  
 Contact resistance: Initial:55m ohms max. Final:40m ohms max.  
 Insertion Force: 25N Max.  
 Removal Force: 0.5N Min. 20N Max.  
 Inverse Insertion: 50N Min.  
 Mating cycle: 12000 cycles, spring is not breaking.



○ For SIP  
 (ST) For CmK/Cpk

RoHS Compliant		HSM 玄茂科技股份有限公司 HSUAN MAO TECHNOLOGY CO., LTD.	
APPD. 核准	SCALE 比例 参考	UNLESS OTHERWISE SPECIFIED TOLERANCE ANG. ±0.0 ±0.30 ±0.25	PART NAME 品名 CFEXPRESS CONNECTOR TYPE B 21PIN SMT TYPE NON-PUSH TYPE CONTACT AREA:GOLD 15U", SOLDER AREA:TIN PLATING BLACK COLOR (MATERIAL:LCP) REEL PACKING ROHS
DWG. 製圖 Betty	UNIT 單位 MM	SIZE 紙張尺寸 A4	PART NO. 料號 C7758-21DS15NBRXR
DATE 制表日 2021/06/29	PAGE 張數 1 OF 2	REV. 版次 A	



RoHS Compliant **HSM 玄茂科技股份有限公司**  
**HSUAN MAO TECHNOLOGY CO., LTD.**

APPD. 核准		UNLESS OTHERWISE SPECIFIED TOLERANCE	PART NAME 品名
DWG. 製圖	Betty	ANG. 0. .00	CFEXPRESS CONNECTOR TYPE B 21PIN SMT TYPE
DATE 制表日	2021/06/29	SIZE. 紙張尺寸	NON-PUSH TYPE CONTACT AREA:GOLD 15U", SOLDER AREA:TIN PLATING BLACK COLOR (MATERIAL:LCP) REEL PACKING ROHS
		SCALE 比例	PART NO.
		UNIT 單位	料號
		PAGE 張數	
		REV. 版次	