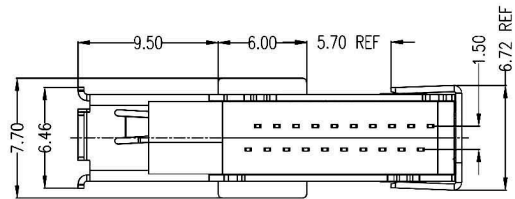
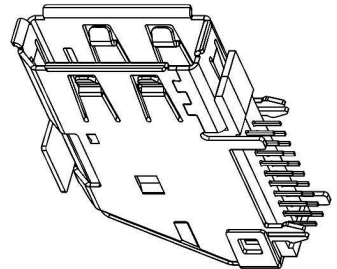
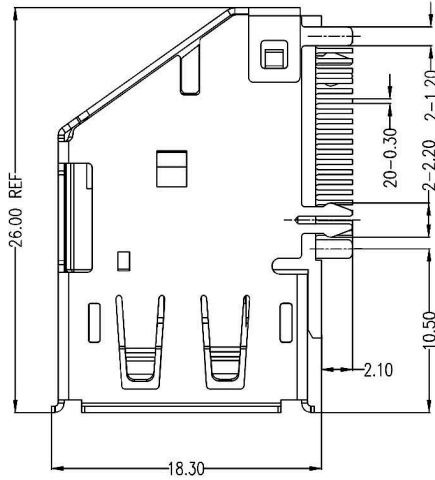


1 2 3 4 5 6 7 8

A
B
C
D
E
F
G
H

A
B
C
D
E
F
G
H

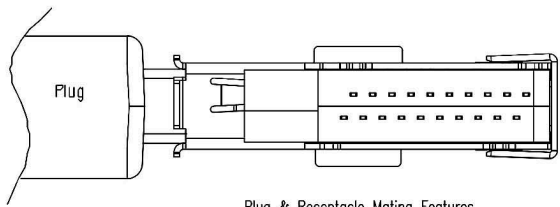
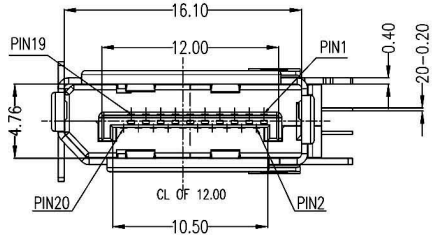


NOTES:

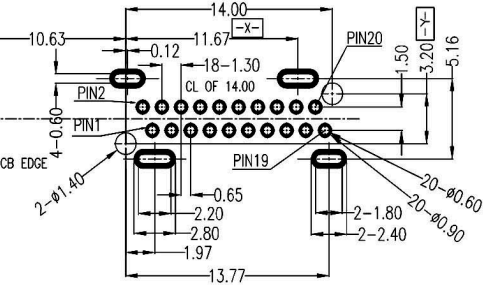
1. Material:
 - Housing: High Temperature Thermoplastic, UL94V-0 Rated. Color: Black.
 - Tongue: High Temperature Thermoplastic, UL94V-0 Rated. Color: Black.
 - Contact: Copper Alloy.
 - Plating: Gold Plating over Nickel on Contact Area. Tin Plating over Nickel on Solder Tail.
 - Shell: Copper Alloy.
 - Plating: Tin Plating on Solder Area, Nickel Plating over All.

2. Mechanical:
 - Insertion Force: 4.5Kgf Max.
 - Withdrawal Force: 1.0~4.0Kgf.
 - Durability: 10,000Cycles.
3. Electrical Specification:
 - Operation Voltage: 40VAC Max.
 - Current Rating: 0.5 Ampere per Contact.
 - Contact Resistance: 30mΩ Max.
 - Insulation Resistance: UnMating Plug: 100MΩ Min at 500V DC. Mating Plug: 50MΩ Min at 150V DC.
 - Dielectric Withstanding Voltage: 500V AC R.MS.

4. Environmental:
 - Operating Temperature: -40°C to +85°C.
 - Wave Solder Peak Temperature: 260°C, 10Sec Max.



Plug & Receptacle Mating Features



RECOMMENDED P.C.B LAYOUT (COMPONENT SIDE VIEW)
TOL 15±0.05 THK=1.60 ALL POSITION TOL ϕ 10.05X17

PIN NUMBER	SOURCE-SIDE PIN ASSIGNMENT	SINK-SIDE PIN ASSIGNMENT	PIN NUMBER	SOURCE-SIDE PIN ASSIGNMENT	SINK-SIDE PIN ASSIGNMENT
1	ML_Lane 0(p)	ML_Lane 3(n)	11	GND	GND
2	GND	GND	12	ML_Lane 3(n)	ML_Lane 0(p)
3	ML_Lane 0(n)	ML_Lane 3(p)	13	CONFIG1	CONFIG1
4	ML_Lane 1(p)	ML_Lane 2(n)	14	CONFIG2	CONFIG2
5	GND	GND	15	AUX CH(p)	AUX CH(p)
6	ML_Lane 1(n)	ML_Lane 2(p)	16	GND	GND
7	ML_Lane 2(p)	ML_Lane 1(n)	17	AUX CH(n)	AUX CH(n)
8	GND	GND	18	HOT PLUG DETECT	HOT PLUG DETECT
9	ML_Lane 2(n)	ML_Lane 1(p)	19	RETURN	RETURN
10	ML_Lane 3(p)	ML_Lane 0(n)	20	DP PWR	DP PWR

RoHS Compliant

HSM 玄茂科技股份有限公司
HSUAN MAO TECHNOLOGY CO., LTD.

APPD. 核准
DWG. 製圖
Betty
DATE 制表日
2023/02/03

SCALE 比例 參考
UNIT 單位 M M
PAGE 張數 1 OF 1
REV. 版次 A

PART NAME 品名
DISPLAYPORT CONNECTOR 20PIN FEMALE
VERTICAL RIGHT ANGLE TYPE W/O LOCATING PEG
SELECTIVE GOLD 30U" PLATING DIP LENGTH=2.1MM
BLACK COLOR TRAY PACKING ROHS
PART NO.
料號 C8606-20FVNIABHR

1 2 3 4 5 6 7 8