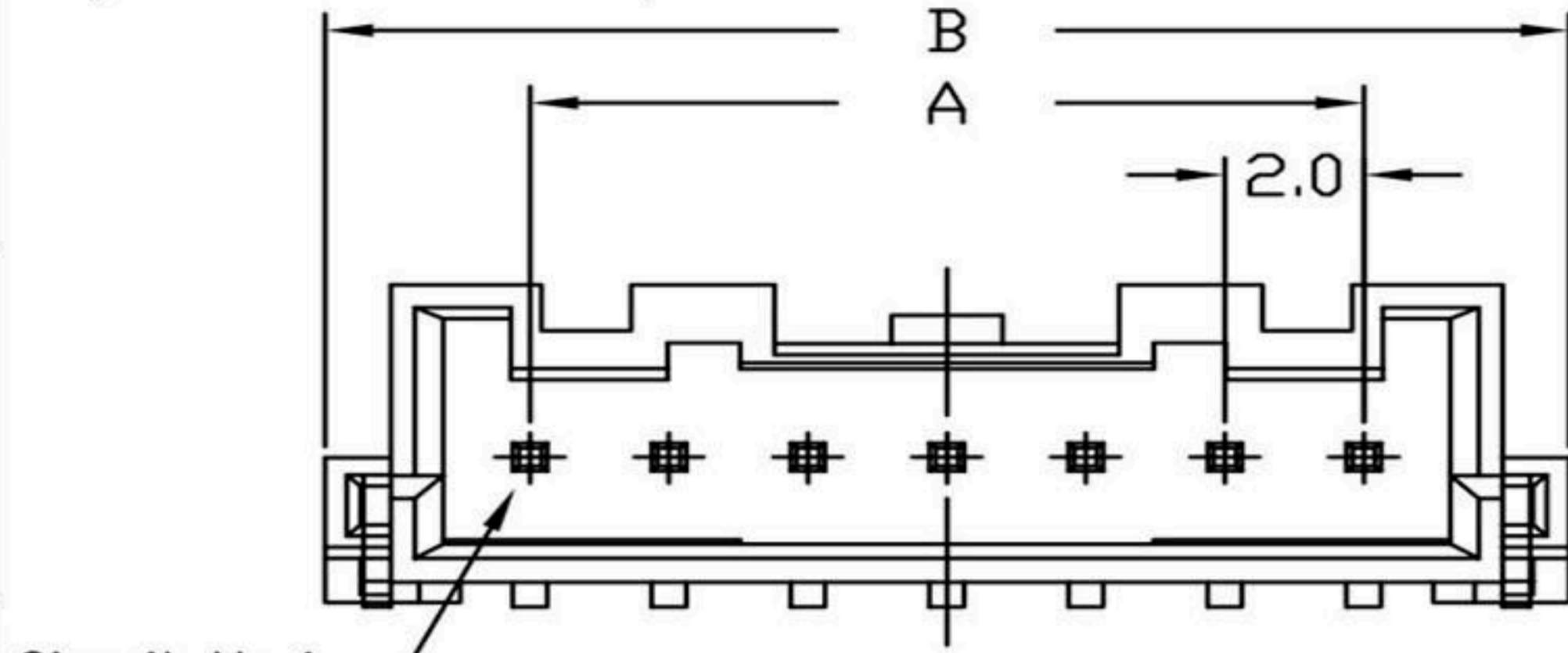
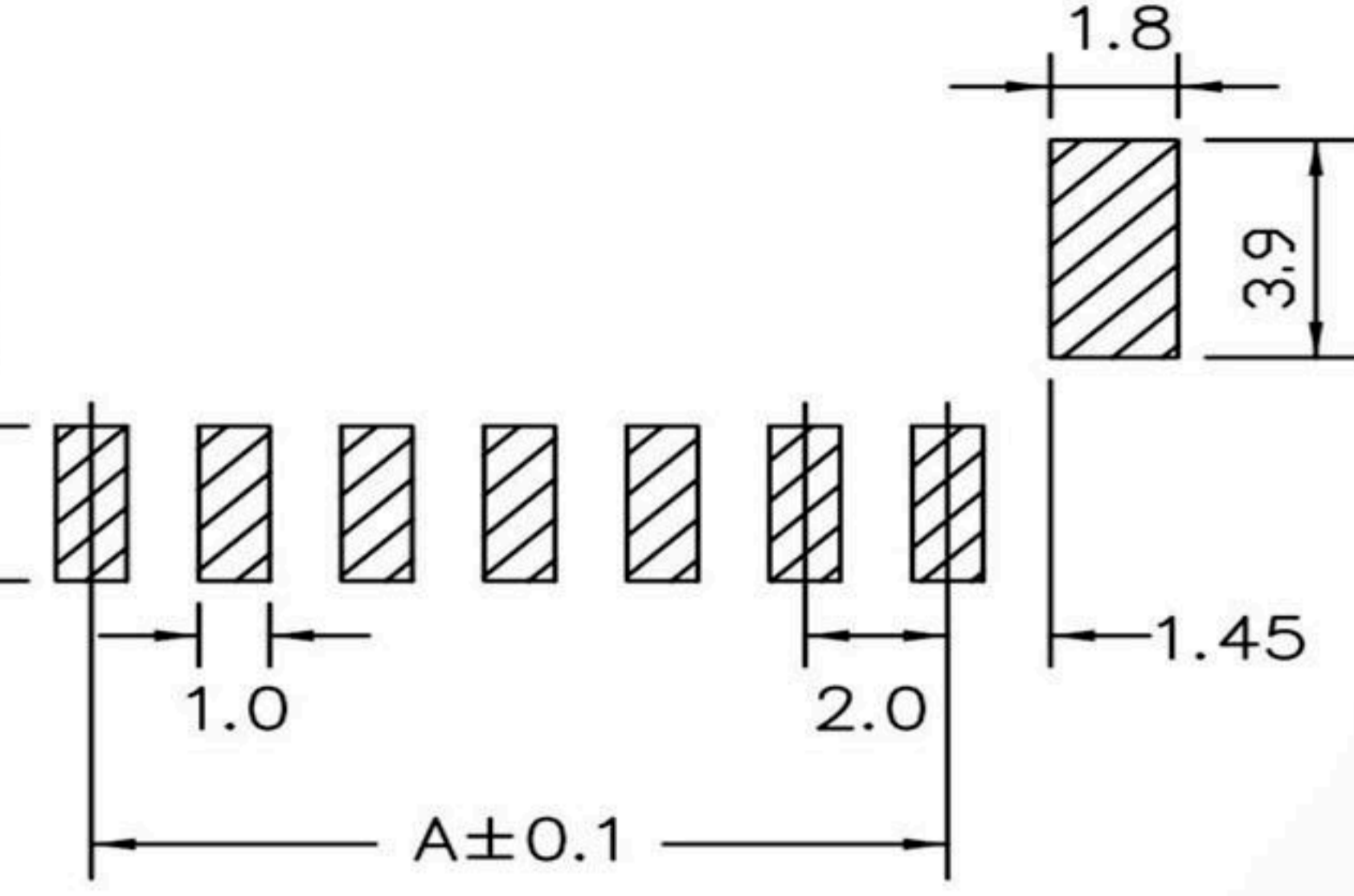
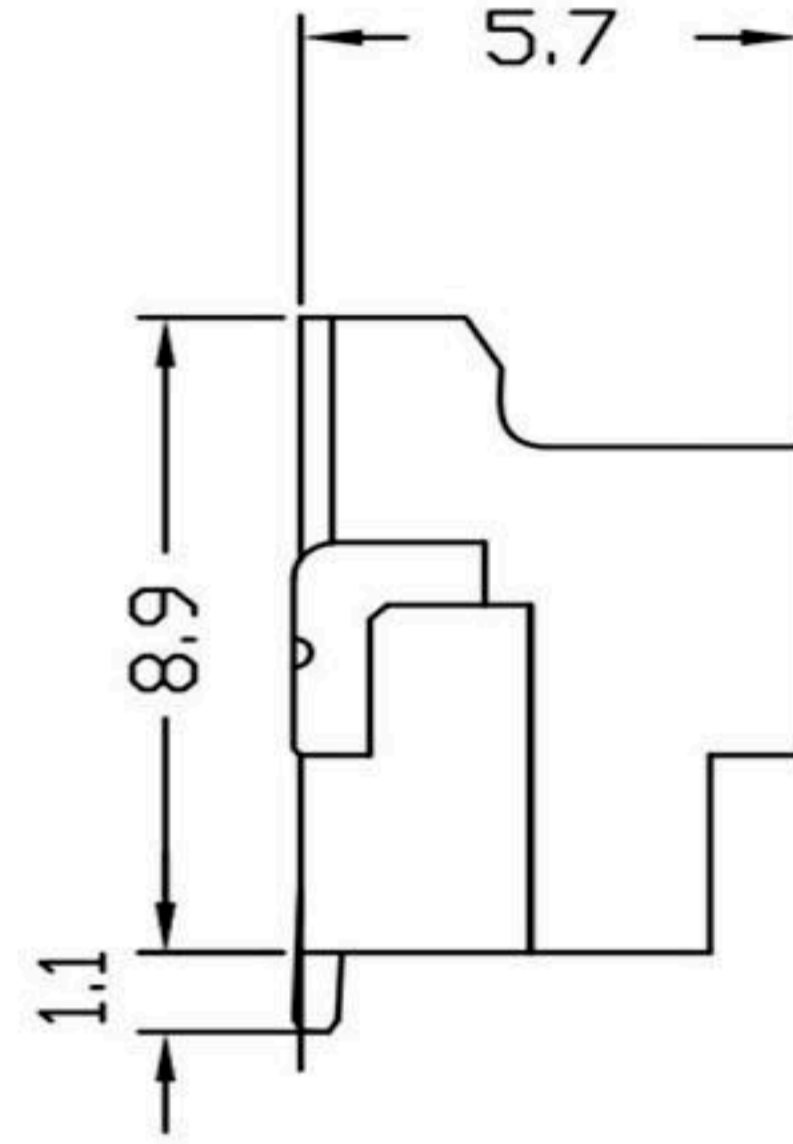
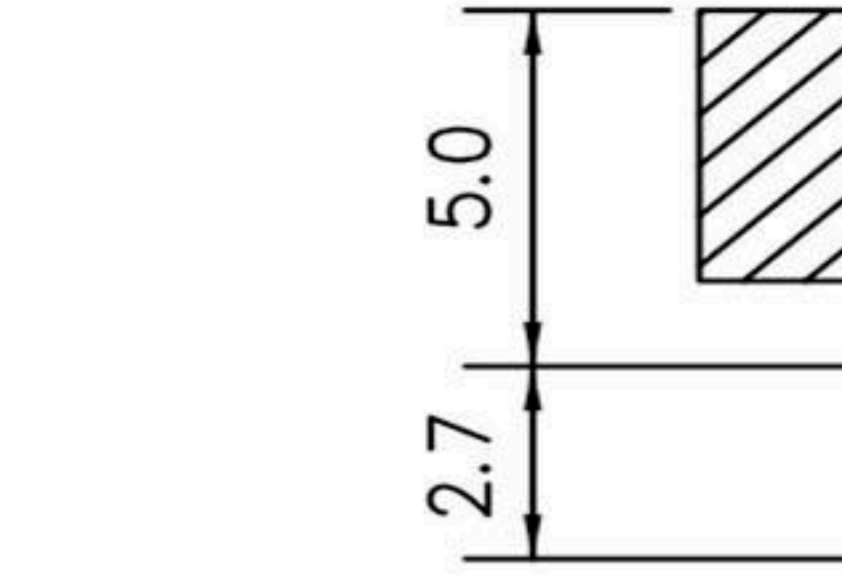
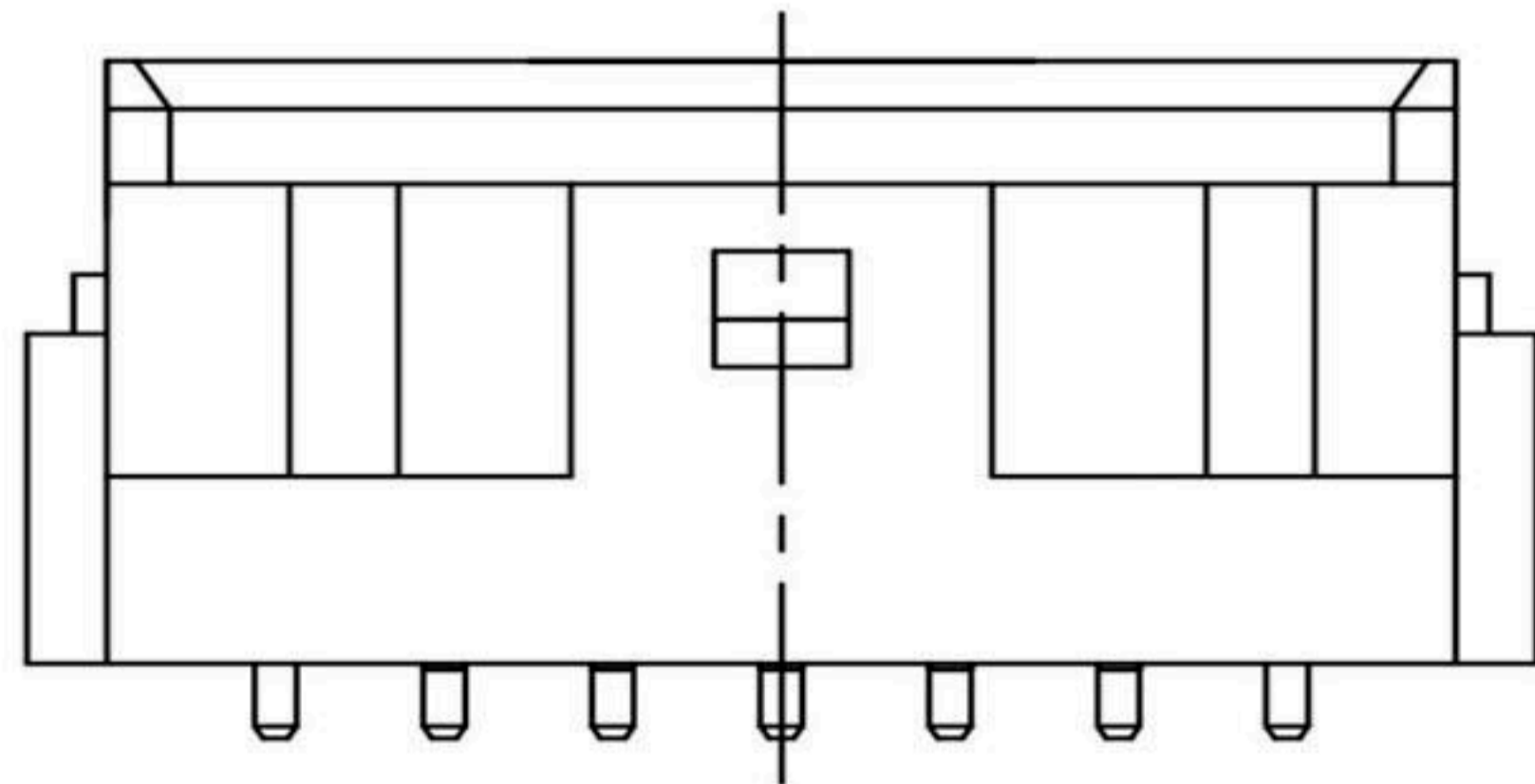
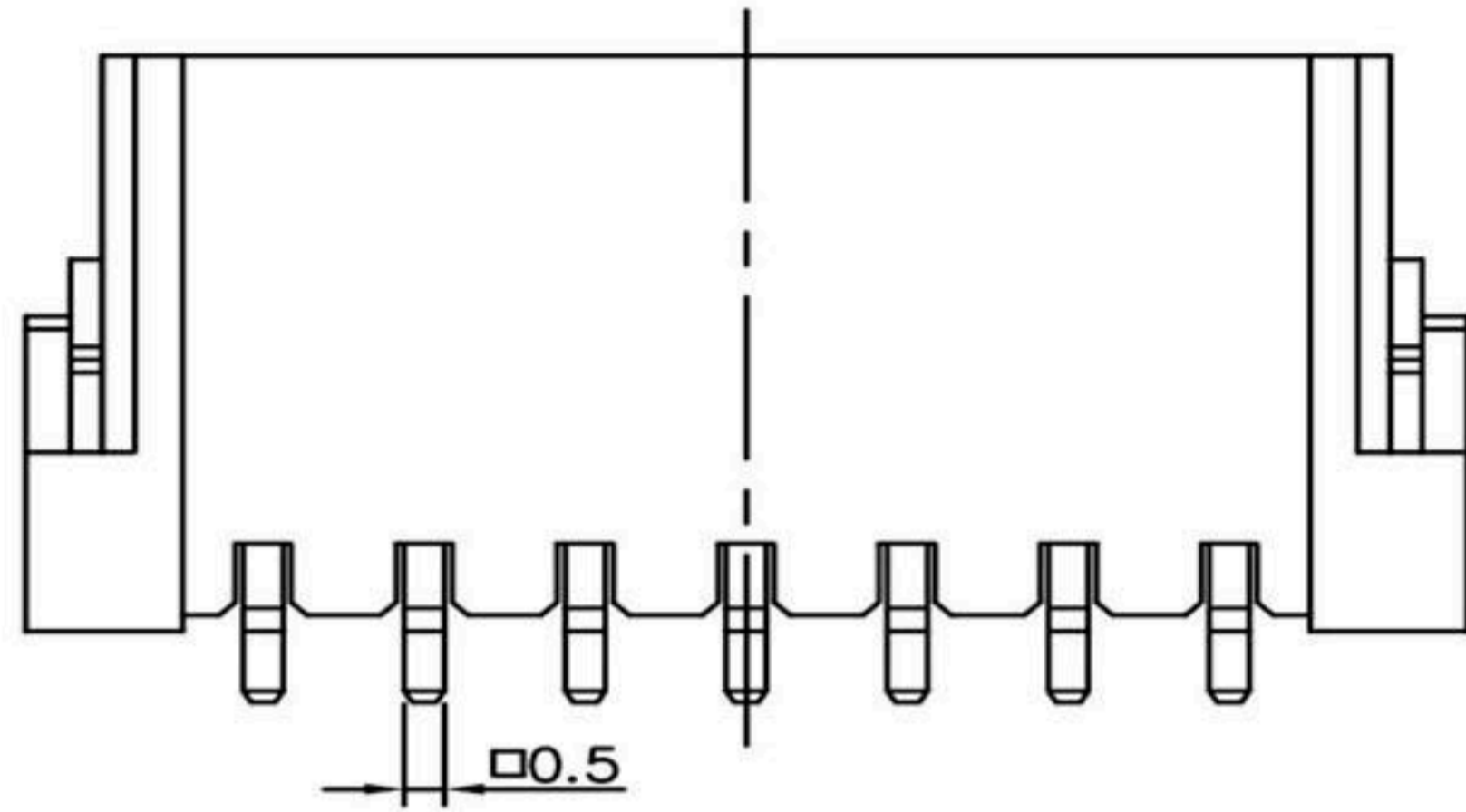


(7 to 9 circuits)



Circuit No.1



RECOMMENDED P.C.BOARD LAYOUT DIMM.

Specifications

Current Rating: 3A AC/ DC (Max)AWG#22
 Voltage Rating: 250V AC/ DC
 Temperature Range: -25°C ~ + 85°C
 Contact Resistance: 20mΩ Max
 Insulation Resistance: 1000MΩ Min
 Withstanding Voltage:800V AC/Minute
 Pin : Brass/ Tin-plated/ Gold-flash
 Wafer Material: Nylon 6T,UL94V-0,natural
 Solder tab:Brass/Tin-plated

Poles	Dimension mm (in.)	
	A	B
7	12.0(0.472)	18.0(0.709)
8	14.0(0.551)	20.0(0.787)
9	16.0(0.630)	22.0(0.866)

RoHS Compliant **HSM** 玄茂科技股份有限公司
 HSUAN MAO TECHNOLOGY CO., LTD.

APPD. 核准		TOLERANCE 容許公差	PART NAME 品名	
DWG. 製圖 Helen		SCALE 比例 參考		JST PA 2.0mm WAFER 1X(7-9)P SMT RIGHT ANGLE TYPE TIN PLATING WHITE INSULATOR ROHS
DATE 制表日 2013/6/10		UNIT 單位 MM		SIZE 紙張尺寸 A4
	PAGE 張數 1 OF 1	REV. 版本 A	PART NO. 料號 W2112-(7~9)PBTWX0R	