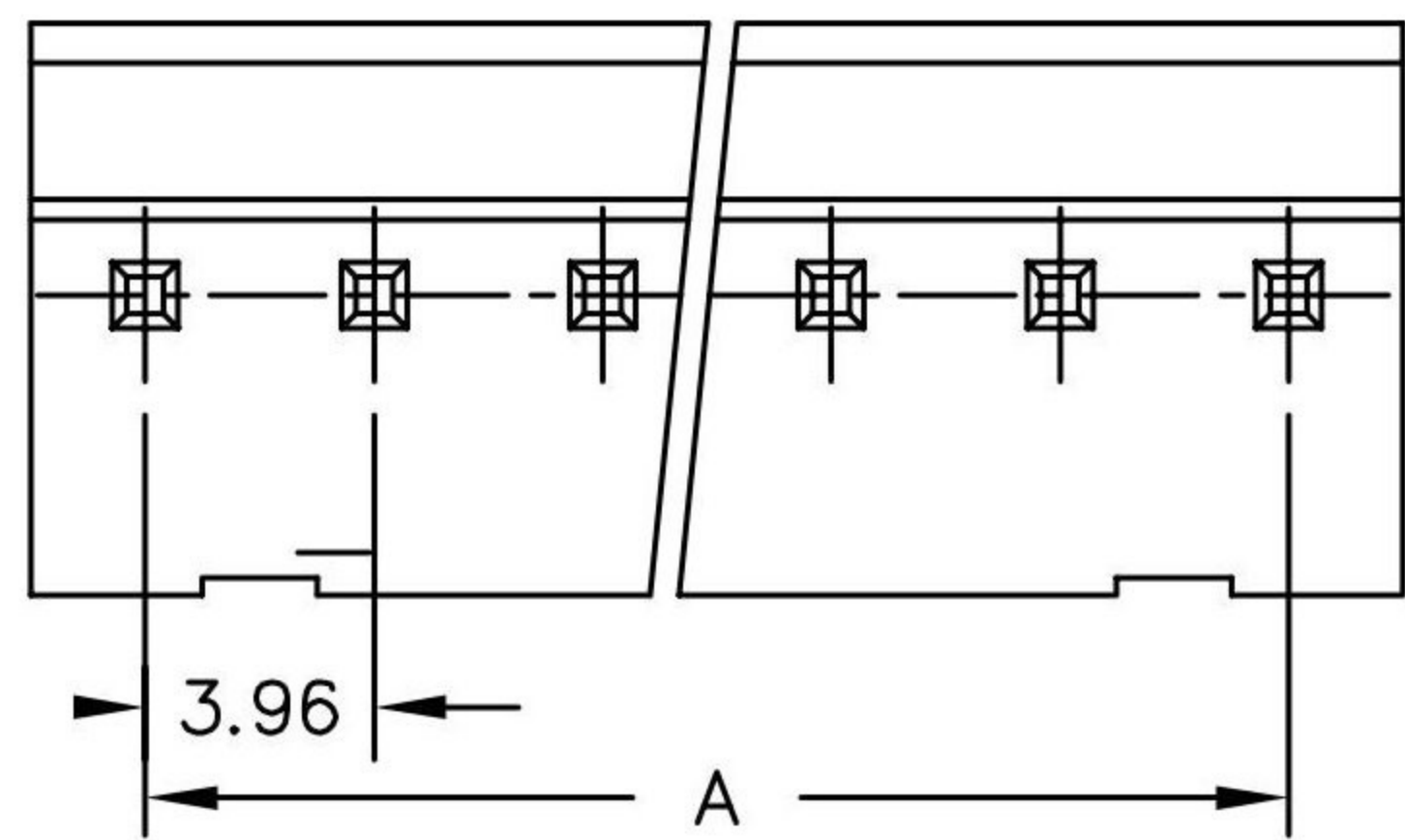


1 2 3 4 5 6 7 8

A



B

C

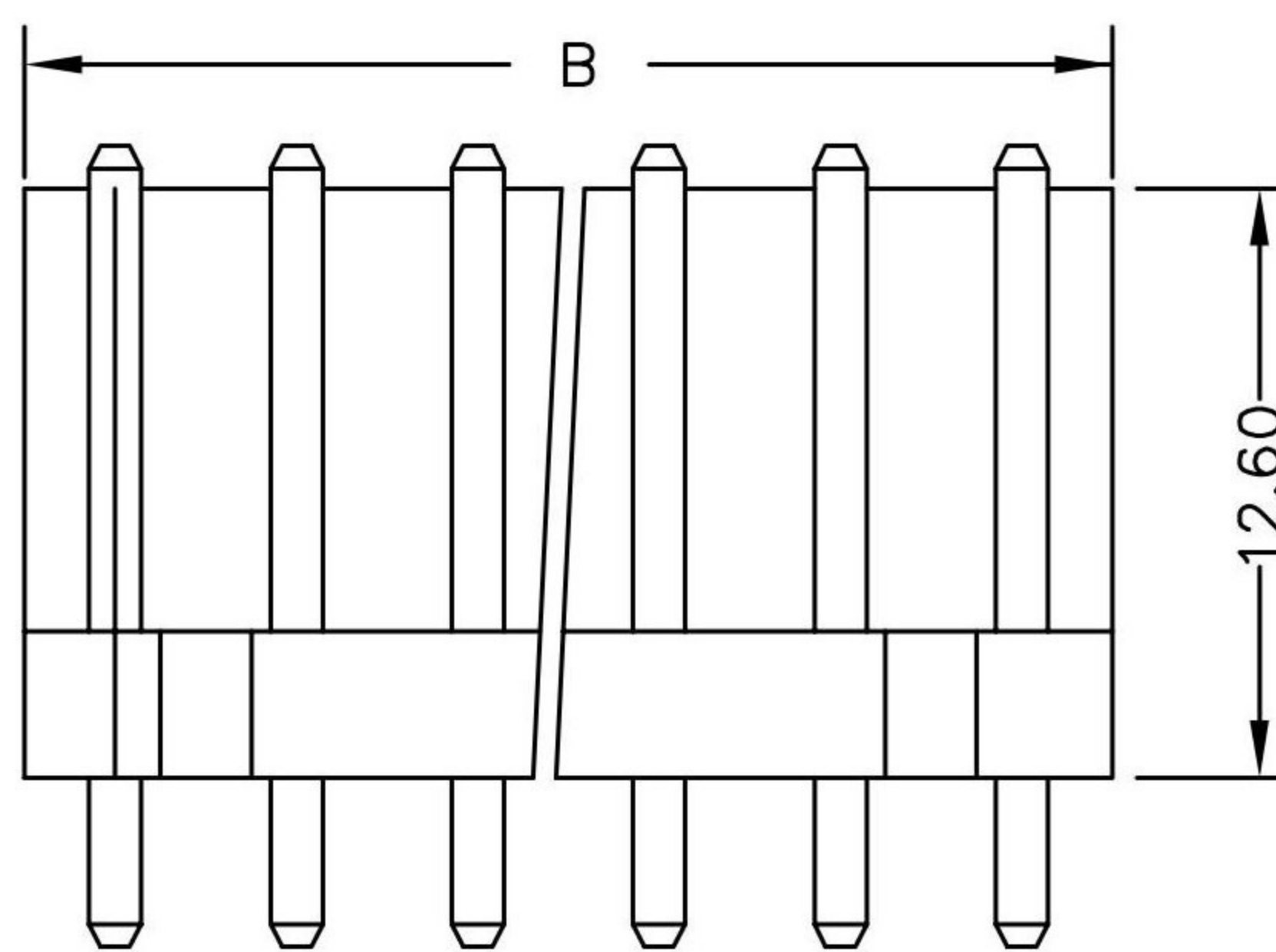
D

E

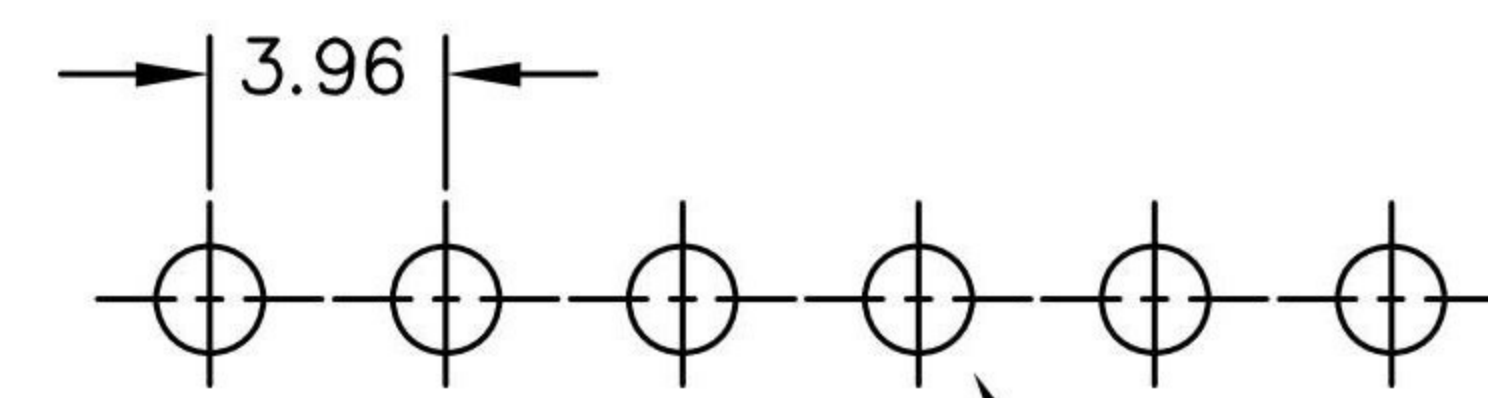
F

G

H



□1.14mm



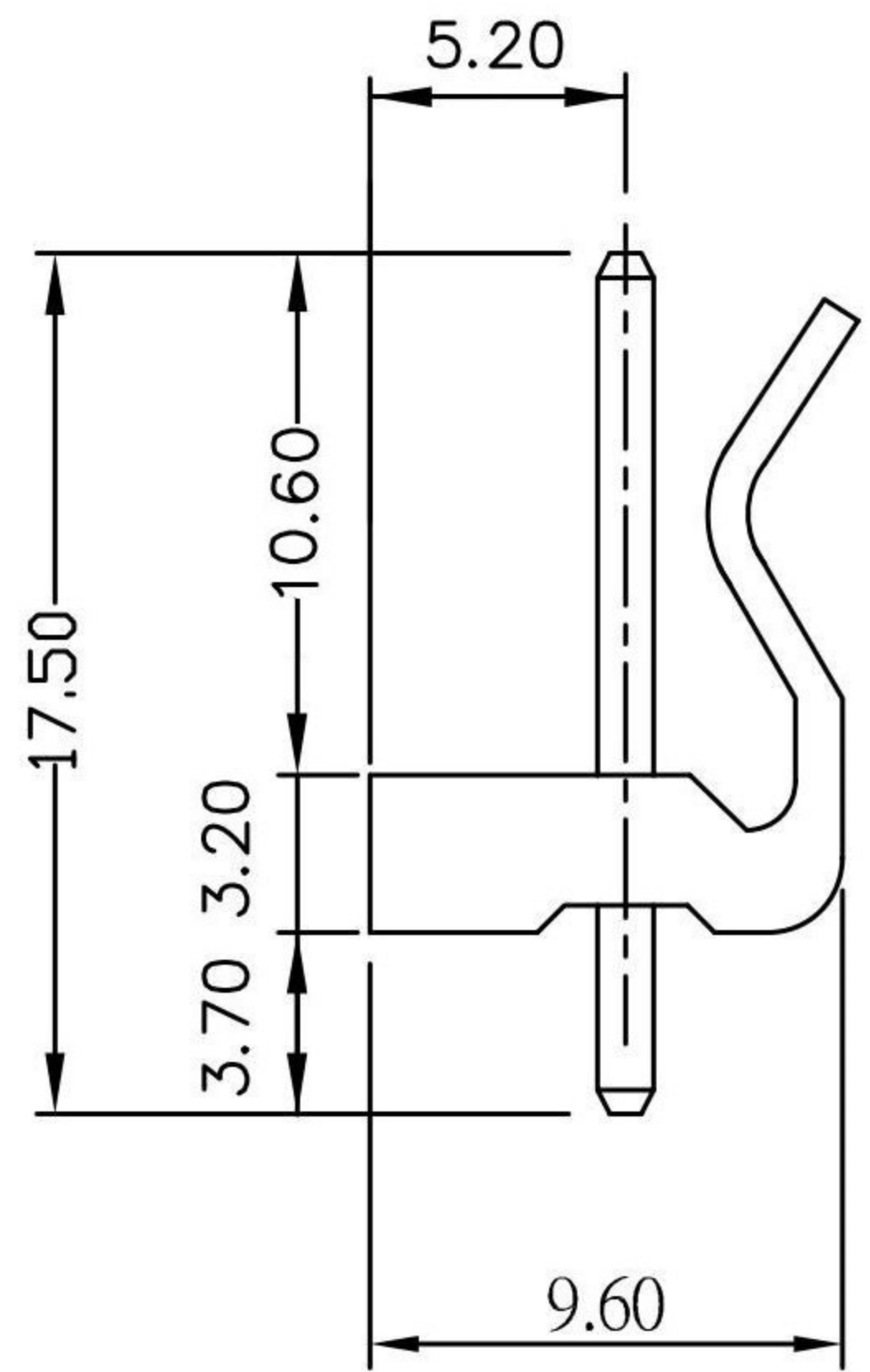
RECOMMENDED P.C.BOARD HOLE DIMM.

1 2 3 4 5 6 7 8

### SPECIFICATIONS

Electrical  
 Current Rating: 5A AC, DC  
 Voltage Rating: 250V AC, DC  
 Operating Temp.: -25°C ~ +85°C  
 Insulation Resistance: 1000MΩ/ min.  
 Dielectric Withstanding Voltage: 1500V AC/ min.  
 Contact Resistance: 10mΩ/ max.

Material  
 Insulator : Nylon66, UL94V-2  
 Terminal : Brass / Tin-Plated



Poles	Dimension mm (in.)	
	A	B
2	3.96	7.92
3	7.92	11.88
4	11.88	15.84
5	15.84	19.80
6	19.80	23.76
7	23.76	27.72
8	27.72	31.68
9	31.86	35.64
10	35.64	39.60
11	39.60	43.56
12	43.56	47.52
13	47.52	51.48
14	51.48	55.44
15	55.44	59.40
16	59.40	63.36
17	63.36	67.32
18	67.32	71.28
19	71.28	75.24
20	75.24	79.20

RoHS Compliant		<b>HSM 玄茂科技股份有限公司</b> <b>HSUAN MAO TECHNOLOGY CO., LTD.</b>	
APPD. 核准 Betty	SCALE 比例 參考 UNIT 單位 MM PAGE 張數 1 OF 1	TOLERANCE 容許公差 .0 ± 0.5 .00 ± 0.35 ANG. ± SIZE. 紙張尺寸 A4 REV. 版次 C	PART NAME 品名 3.96mm WAFER STRAIGHT TYPE 1XXXP WITH LOCKING RIBS TIN PLATED WHITE COLOR ROHS PART NO. 料號 W2400-XXPSYTW0R
DWG. 製圖 Helen	DATE 制表日 2022/8/17		

A

B

C

D

E

F

G

H